

# FOR LEASE

**100% AC OFFICE WAREHOUSE IN ORLANDO CENTRAL PARK**  
**1620 PREMIER ROW ORLANDO, FL 32809**



## **FACILITY DETAILS:**

- 5,500 SF – 5,000 SF warehouse/500 SF of office with 1 dock door
- 100% Air Conditioned with 9'6" – 11' clear ceiling height
- 23,110 SF Building on 1.55 Acres
- 9'6" to 11' Clear Height and 400 Amp 3 Phase Power
- Zoned I-2/I-3 Orange County with Ample Parking
- Great Manufacturing Space or Production Space
- Located near US 441, Sand Lake Road, SR 528, SR 408, the Florida Turnpike, & 4 miles from Orlando International Airport

**LEASE RATE**  
**\$5.95**  
**Modified Gross**



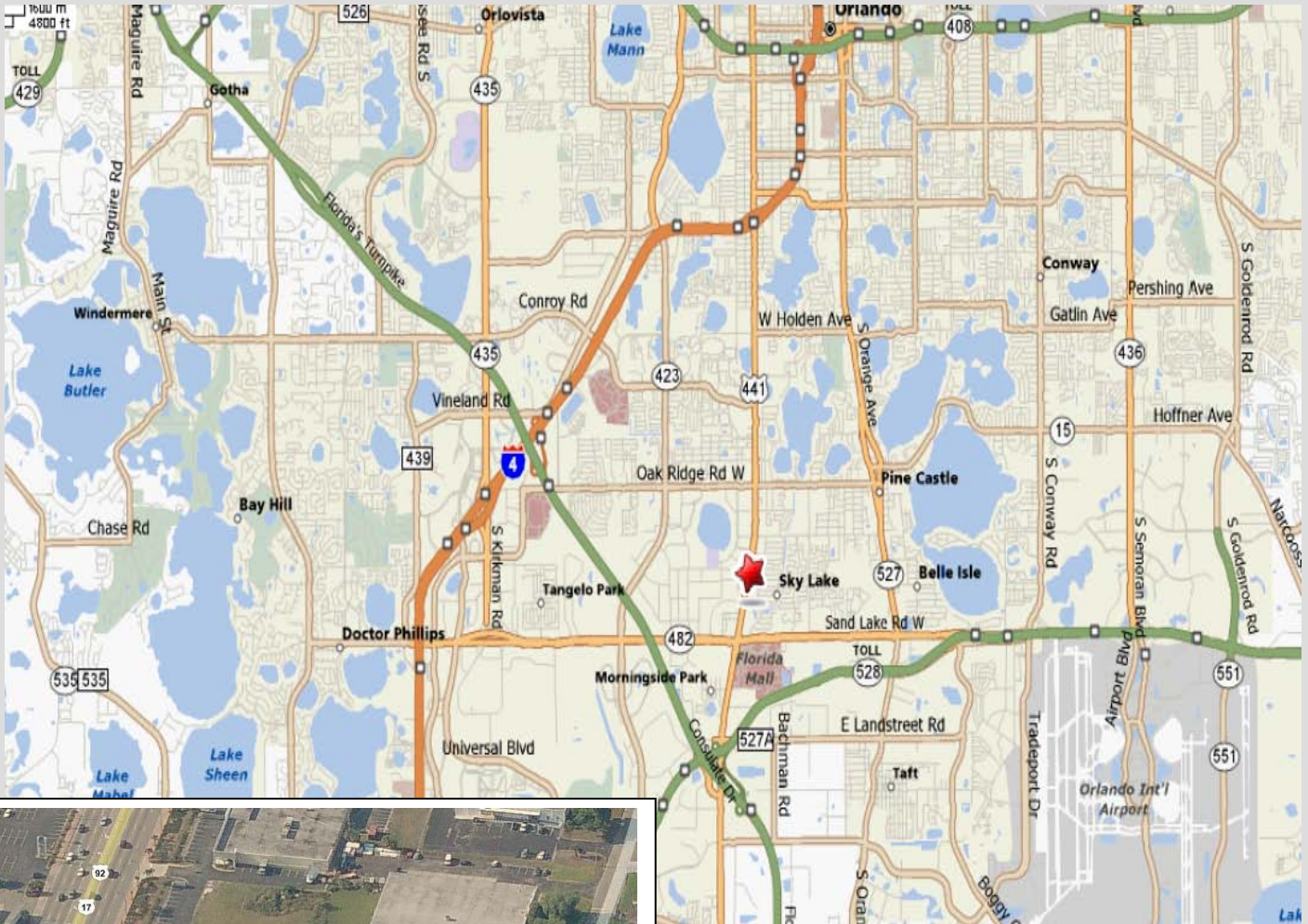
**RESULTS REAL ESTATE PARTNERS, LLC**  
Licensed Commercial Real Estate Brokers

108 Commerce St, Suite 200  
Lake Mary, FL 32746  
Office (407) 647-0200  
Fax (407) 647-0205  
[www.ResultsREPartners.com](http://www.ResultsREPartners.com)

## **CONTACT:**

**Vincent F. Wolle, CCIM, SIOR**  
Cell (407) 448-1823  
[vwolle@ResultsREPartners.com](mailto:vwolle@ResultsREPartners.com)

# LOCATOR MAP



- Located in Orlando Central Park



## **RESULTS REAL ESTATE PARTNERS, LLC**

Licensed Commercial Real Estate Brokers

108 Commerce St, Suite 200

Lake Mary, FL 32746

Office (407) 647-0200

Fax (407) 647-0205

[www.ResultsREPartners.com](http://www.ResultsREPartners.com)

## **CONTACT:**

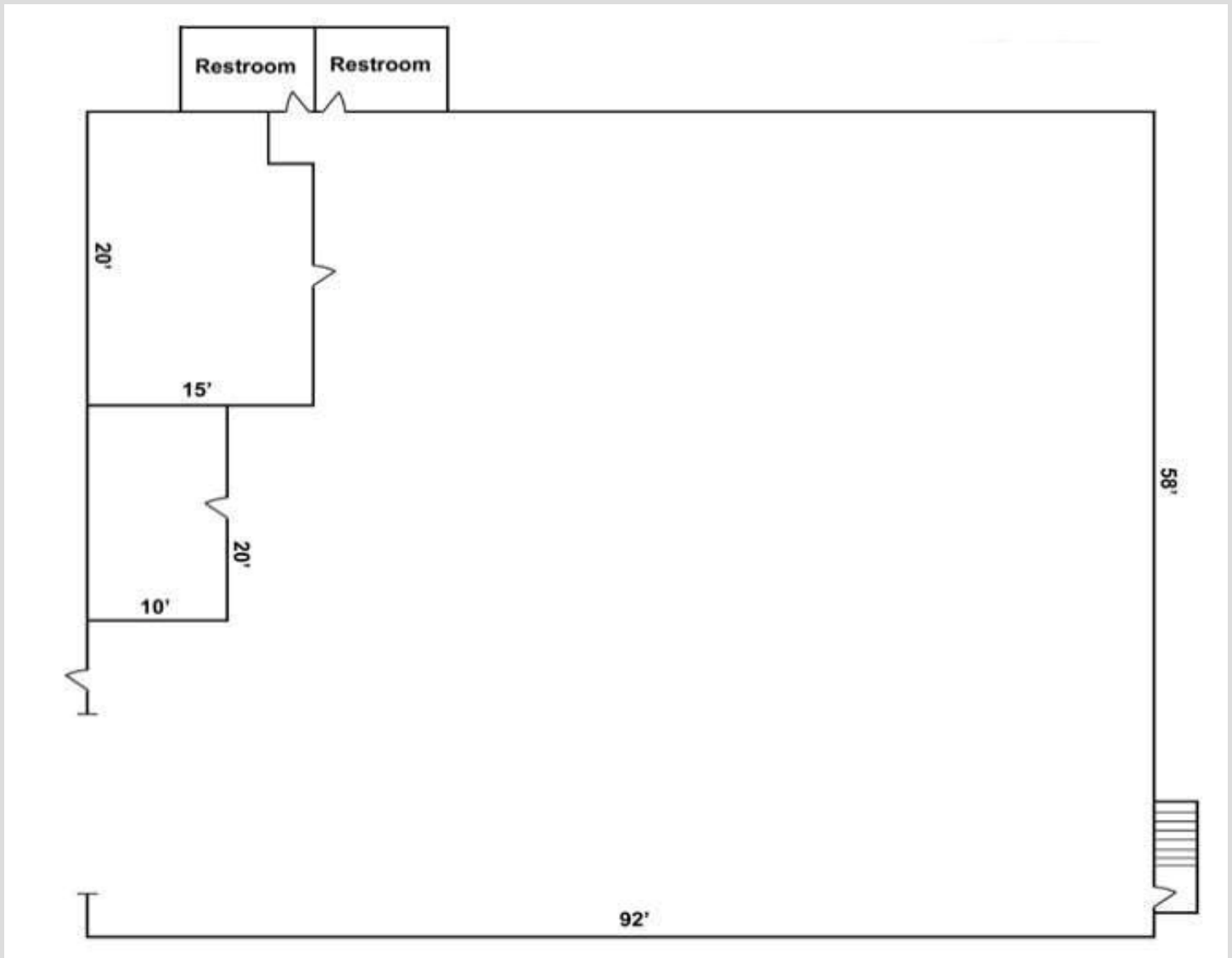
**Vincent F. Wolle, CCIM, SIOR**

**Cell (407) 448-1823**

**[vwolle@ResultsREPartners.com](mailto:vwolle@ResultsREPartners.com)**

This information is from sources we deem reliable and is subject to prior sale, lease, withdrawal without notice, or change in prices, rates, or conditions. No representation is made as to the accuracy of any information furnished.

## Layout



### **RESULTS REAL ESTATE PARTNERS, LLC**

Licensed Commercial Real Estate Brokers

108 Commerce St, Suite 200

Lake Mary, FL 32746

Office (407) 647-0200

Fax (407) 647-0205

**[www.ResultsREPartners.com](http://www.ResultsREPartners.com)**

### **CONTACT:**

**Vincent F. Wolle, CCIM, SIOR**

**Cell (407) 448-1823**

**[vwolle@ResultsREPartners.com](mailto:vwolle@ResultsREPartners.com)**

This information is from sources we deem reliable and is subject to prior sale, lease, withdrawal without notice, or change in prices, rates, or conditions. No representation is made as to the accuracy of any information furnished.