

**FOR
LEASE**

Multi-Tenant Rear Load Office/Warehouse Space

974 Explorer Cove
Altamonte Springs, FL 32701



PROPERTY HIGHLIGHTS

- **40,097 SF Multi-Tenant Rear Loading Warehouse**
- **Block and Metal Construction with 20' Clear Height**
- **Grade Level Doors (12'-14' wide doors by 14' tall)**
- **Covered Truck Well Access with Ample Parking**
- **Wet Fire Protection System, 3 Phase Power, Monitored Security**
- **Building Signage Available**
- **Looking for 5 Year Lease Term Minimum**
 - **Suite 132: 3,000 SF (500 Office, 2,500 WH, 1 Dock) \$10.50 NNN**
 - **Suite 128: 2,650 SF (250 Office, 2,400 WH, 1 Dock, 1 Grade) \$10.50 NNN**
 - **Suite 124: 4,600 SF (200 Office, 4,400 WH, 1 Grade) \$6.50 NNN**

All units are contiguous so up to 10,250 SF

CONTACT

Vincent F. Wolle, CCIM, SIOR
407.448.1823 *mobile*
CREManager@Gmail.com

Results Real Estate Partners, LLC
Licensed Commercial Real Estate Brokers
108 Commerce Street, Suite 200
Lake Mary, Florida 32746

407.647.0200 *main*
407.647.0205 *fax*

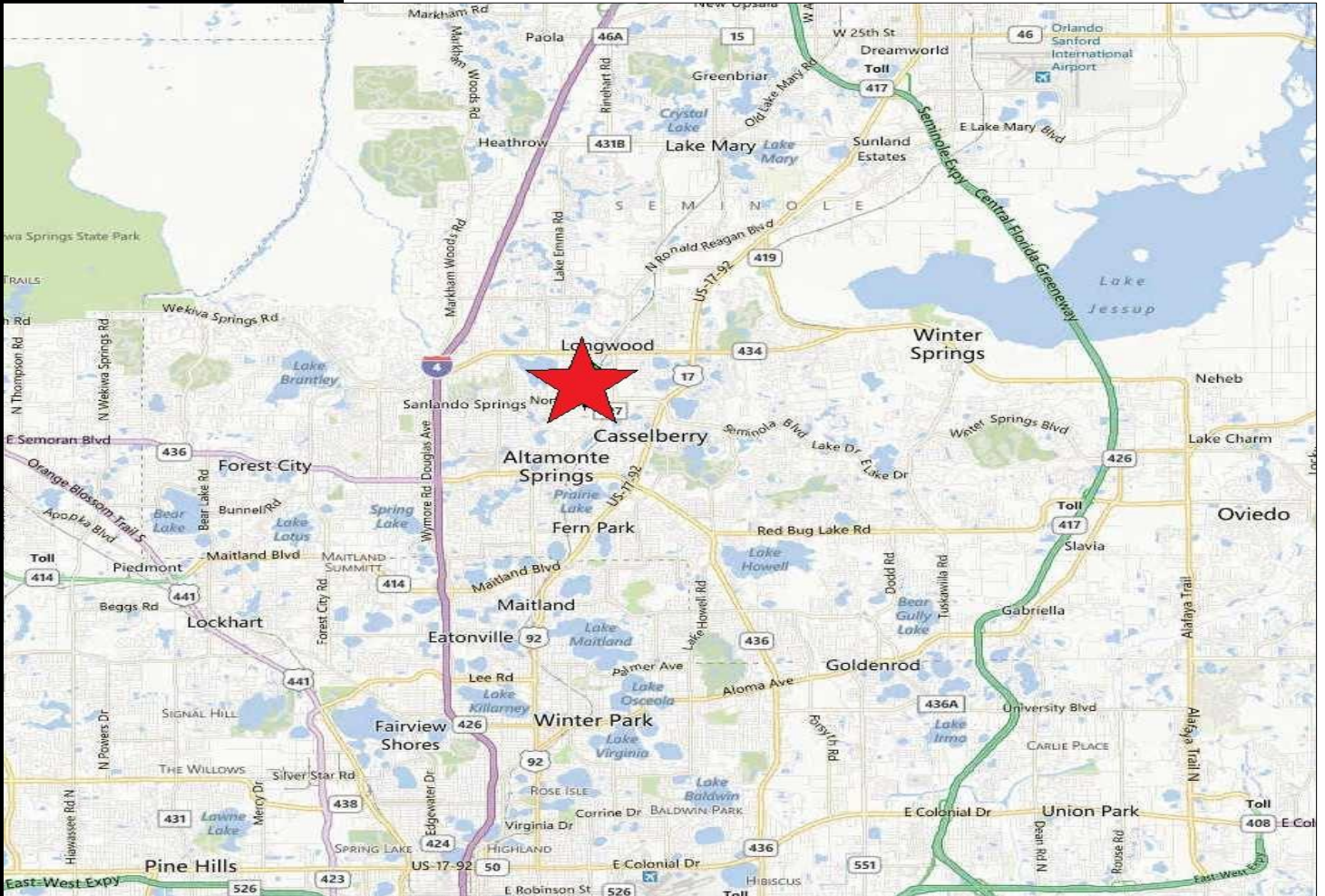
www.ResultsREPartners.com

This information is from sources we deem reliable and is subject to prior sale, lease, withdrawal without notice, or change in prices, rates, or conditions. No representation is made as to the accuracy of any information furnished.

**FOR
LEASE**

Multi-Tenant Rear Load Office/Warehouse Space

974 Explorer Cove
Altamonte Springs, FL 32701



CONTACT

Vincent F. Wolle, CCIM, SIOR
407.448.1823 *mobile*
CREManager@Gmail.com

Results Real Estate Partners, LLC
Licensed Commercial Real Estate Brokers
108 Commerce Street, Suite 200
Lake Mary, Florida 32746

407.647.0200 *main*
407.647.0205 *fax*

www.ResultsREPartners.com

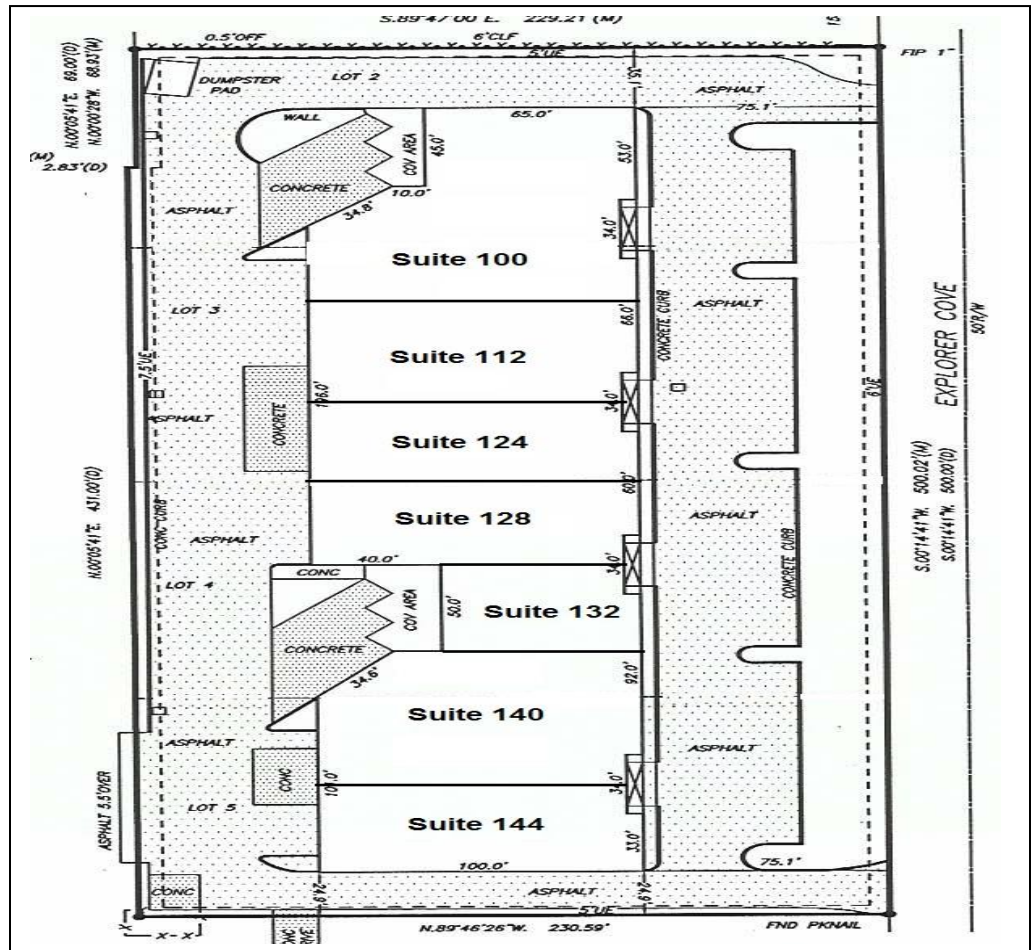
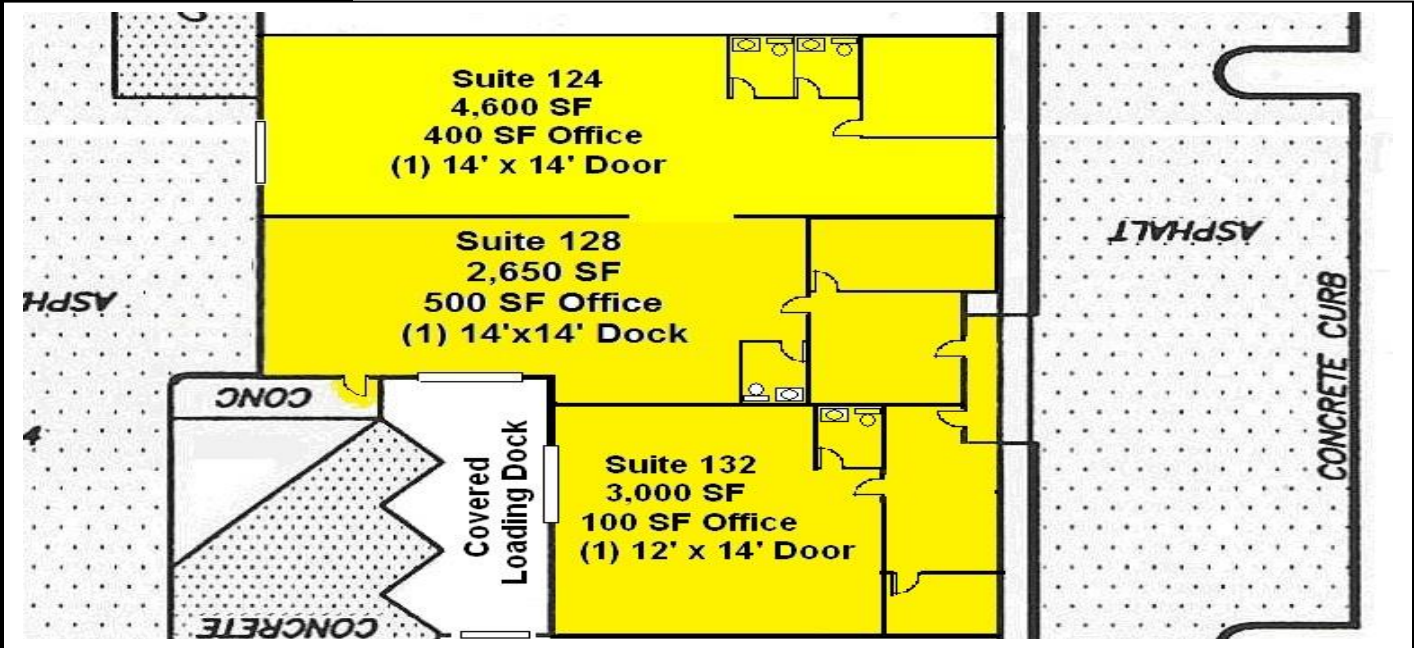


This information is from sources we deem reliable and is subject to prior sale, lease, withdrawal without notice, or change in prices, rates, or conditions. No representation is made as to the accuracy of any information furnished.

**FOR
LEASE**

Multi-Tenant Rear Load Office/Warehouse Space

974 Explorer Cove
Altamonte Springs, FL 32701



CONTACT

Vincent F. Wolle, CCIM, SIOR
407.448.1823 *mobile*
CREManager@Gmail.com

Results Real Estate Partners, LLC
Licensed Commercial Real Estate Brokers
108 Commerce Street, Suite 200
Lake Mary, Florida 32746

407.647.0200 *main*
407.647.0205 *fax*

www.ResultsREPartners.com

This information is from sources we deem reliable and is subject to prior sale, lease, withdrawal without notice, or change in prices, rates, or conditions. No representation is made as to the accuracy of any information furnished.