

**FOR
LEASE**

MULTI-TENANT OFFICE/RETAIL CENTER

6827 N. ORANGE BLOSSOM TRAIL ORLANDO, FL



CONTACT

Vincent F. Wolle, CCIM, SIOR
407.448.1823 *mobile*
CREManager@Gmail.com

Or

Jeff Gindi
407.925.4464 *mobile*
jeffgindi@ResultsREPartners.com

Results Real Estate Partners, LLC
Licensed Commercial Real Estate Brokers
108 Commerce Street, Suite 200
Lake Mary, Florida 32746

407.647.0200 *main*
407.647.0205 *fax*

www.ResultsREPartners.com

PROPERTY HIGHLIGHTS

- 16,945 SF (10 Suite) Shopping Center on busy HW 441
- 1.93 Acre site zoned C-1 with 4/1000 parking ratio (Orange County)
- Curb cut for easy access from either direction from the highway
- Suites sizes range from 1,200 SF to 4,175 SF
- Owner will amortize improvements for credit national tenant
- Suite 8 comes with outside play area great for day care or school use
- Fenced in site with ample parking (Over flow parking available)
- Separate utilities per bay/glass storefront access
- Building and pylon signage
- Close to Rose Ave, Maitland Blvd, Edgewater Drive, Lee Rd and 429 located on HW 441 in Lockhart
- Lease Rate: Starting at \$12 NNN (OPEX \$3.00)
- Lease Terms: 5 Year Minimum

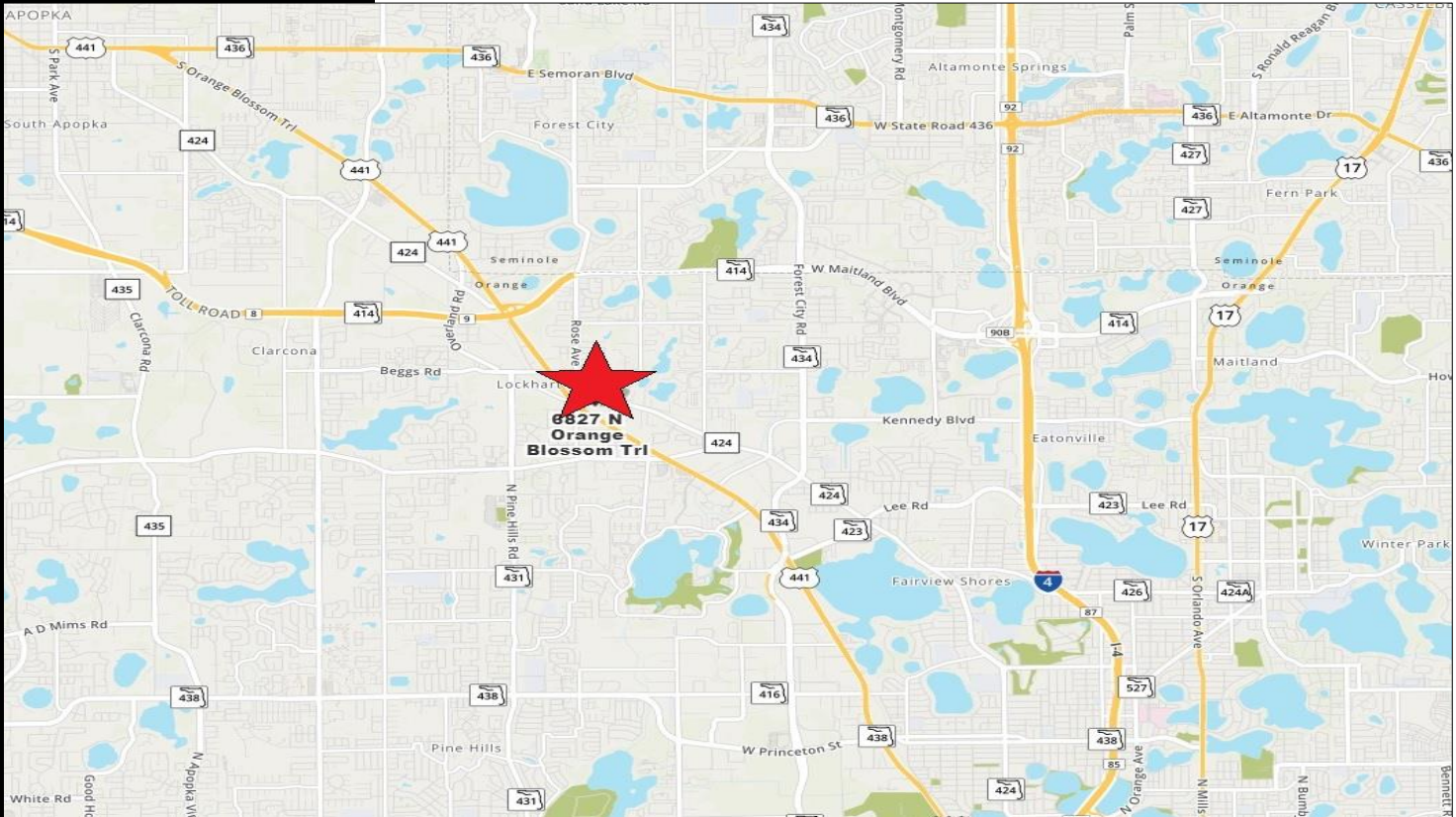
This information is from sources we deem reliable and is subject to prior sale, lease, withdrawal without notice, or change in prices, rates, or conditions. No representation is made as to the accuracy of any information furnished.

**FOR
LEASE**

MULTI-TENANT OFFICE/RETAIL CENTER



6827 N. ORANGE BLOSSOM TRAIL ORLANDO, FL



CONTACT

Vincent F. Wolle, CCIM, SIOR
407.448.1823 *mobile*
CREManager@Gmail.com

Or

Jeff Gindi
407.925.4464 *mobile*
jeffgindi@ResultsREPartners.com

Results Real Estate Partners, LLC
Licensed Commercial Real Estate Brokers
108 Commerce Street, Suite 200
Lake Mary, Florida 32746

407.647.0200 *main*
407.647.0205 *fax*

www.ResultsREPartners.com

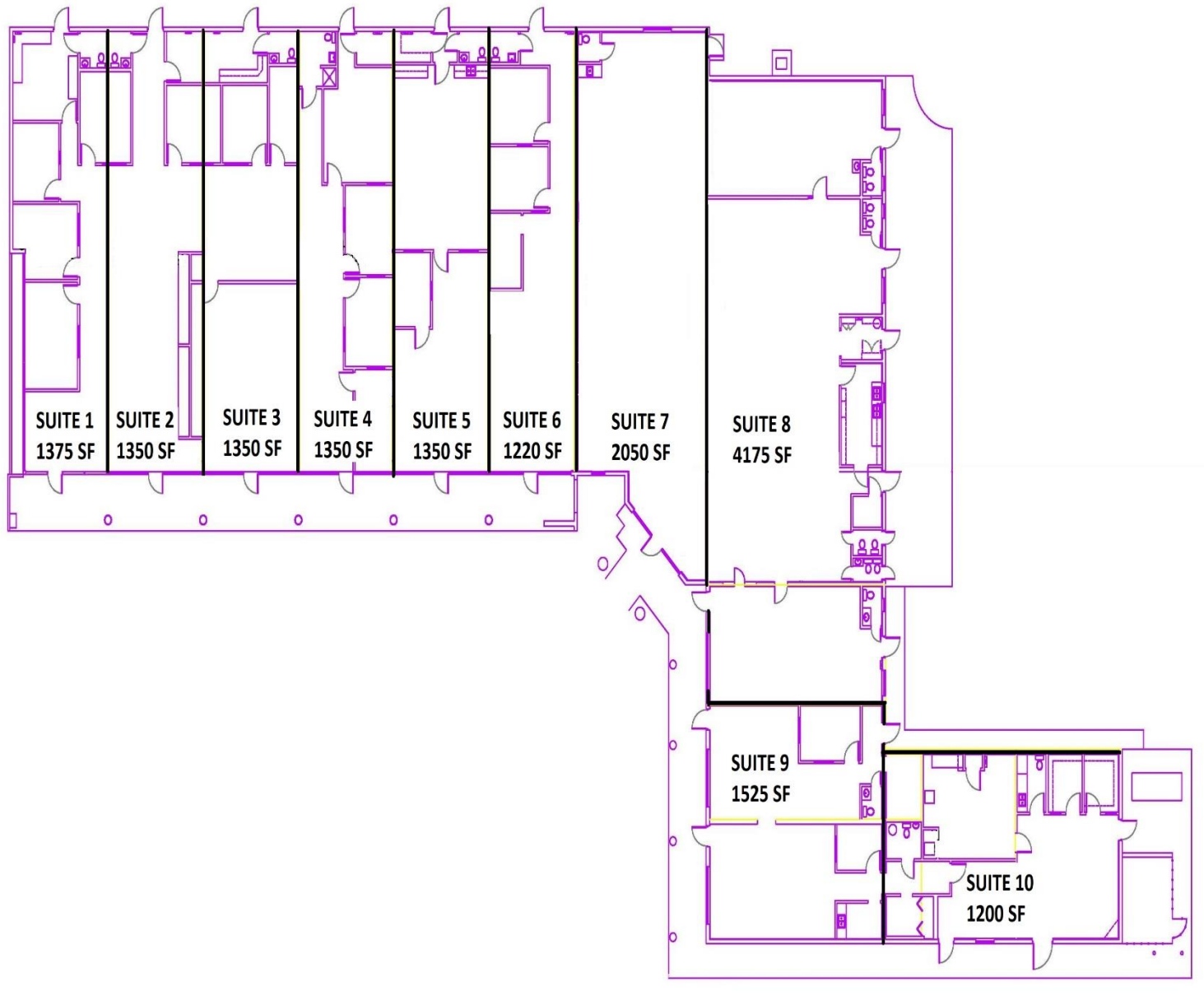


This information is from sources we deem reliable and is subject to prior sale, lease, withdrawal without notice, or change in prices, rates, or conditions. No representation is made as to the accuracy of any information furnished.

**FOR
LEASE**

MULTI-TENANT OFFICE/RETAIL CENTER

6827 N. ORANGE BLOSSOM TRAIL ORLANDO, FL



Results Real Estate Partners, LLC
Licensed Commercial Real Estate Brokers
108 Commerce Street, Suite 200
Lake Mary, Florida 32746

407.647.0200 *main*
407.647.0205 *fax*

www.ResultsREPartners.com



This information is from sources we deem reliable and is subject to prior sale, lease, withdrawal without notice, or change in prices, rates, or conditions. No representation is made as to the accuracy of any information furnished.