

**FOR
LEASE**

**INDUSTRIAL LAND
READY FOR DEVELOPMENT**

**CR 448 & CR 561
TAVARES, FL 32778**



PROPERTY HIGHLIGHTS

- 9.2+/- Acres Zoned Heavy Industrial
- 383' of frontage on CR 448 and 1,076' Deep
- Cleared, Flat Land, with utilities at the site
- Quick Access to Transportation, CR 561, CR 448, and Close to HW 19 and 441
- Rail Access is located at the rear of the property
- Between 84 Lumber and Blue Rhino
- Potential BTS for Credit Tenant
- 3 Year Minimum Term
- **Lease Rate: \$1,000/ Acre (for the entire site)**
- **Lease Rate for 2-5 Acres: \$2,000/Acre**

CONTACT

Vincent F. Wolle
407-448-1823 *mobile*
CREManager@Gmail.com

Results Real Estate Partners, LLC
Licensed Commercial Real Estate Brokers
108 Commerce Street, Suite 200
Lake Mary, Florida 32746

407.647.0200 *main*
407.647.0205 *fax*

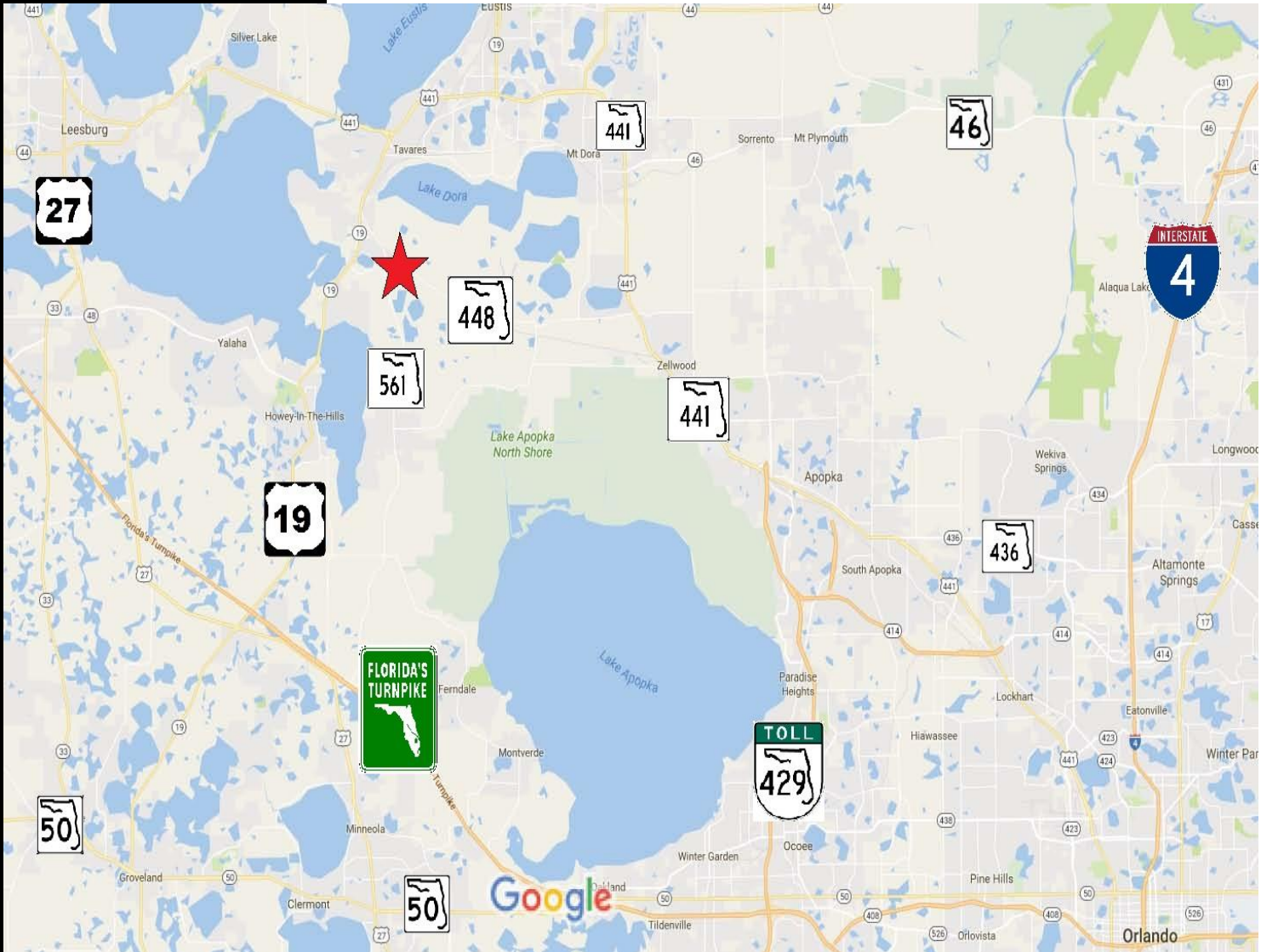
www.ResultsREPartners.com

This information is from sources we deem reliable and is subject to prior sale, lease, withdrawal without notice, or change in prices, rates, or conditions. No representation is made as to the accuracy of any information furnished.

**FOR
LEASE**

**INDUSTRIAL LAND
READY FOR DEVELOPMENT**

**CR 448 & CR 561
TAVARES, FL 32778**



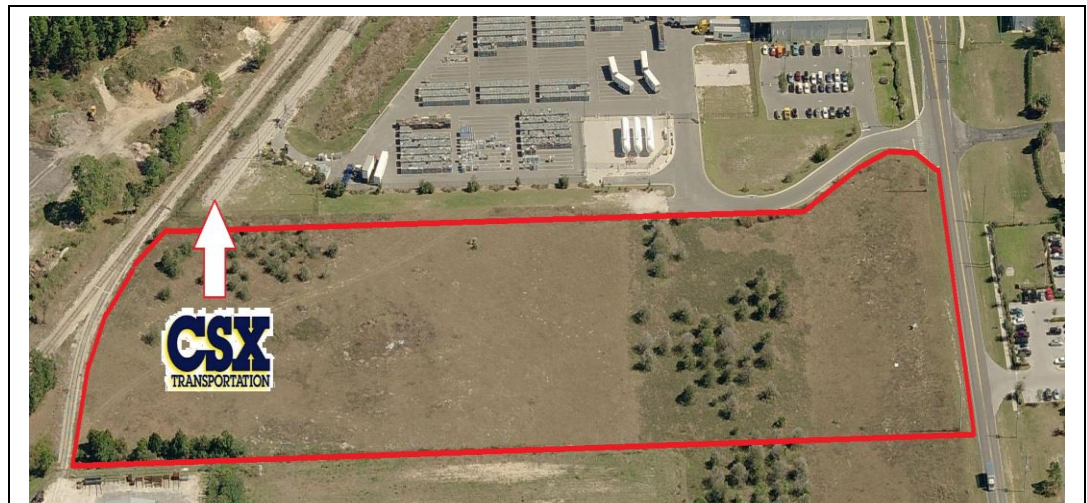
CONTACT

Vincent F. Wolle
407-448-1823 *mobile*
CREManager@Gmail.com

Results Real Estate Partners, LLC
Licensed Commercial Real Estate Brokers
108 Commerce Street, Suite 200
Lake Mary, Florida 32746

407.647.0200 *main*
407.647.0205 *fax*

www.ResultsREPartners.com



This information is from sources we deem reliable and is subject to prior sale, lease, withdrawal without notice, or change in prices, rates, or conditions. No representation is made as to the accuracy of any information furnished.