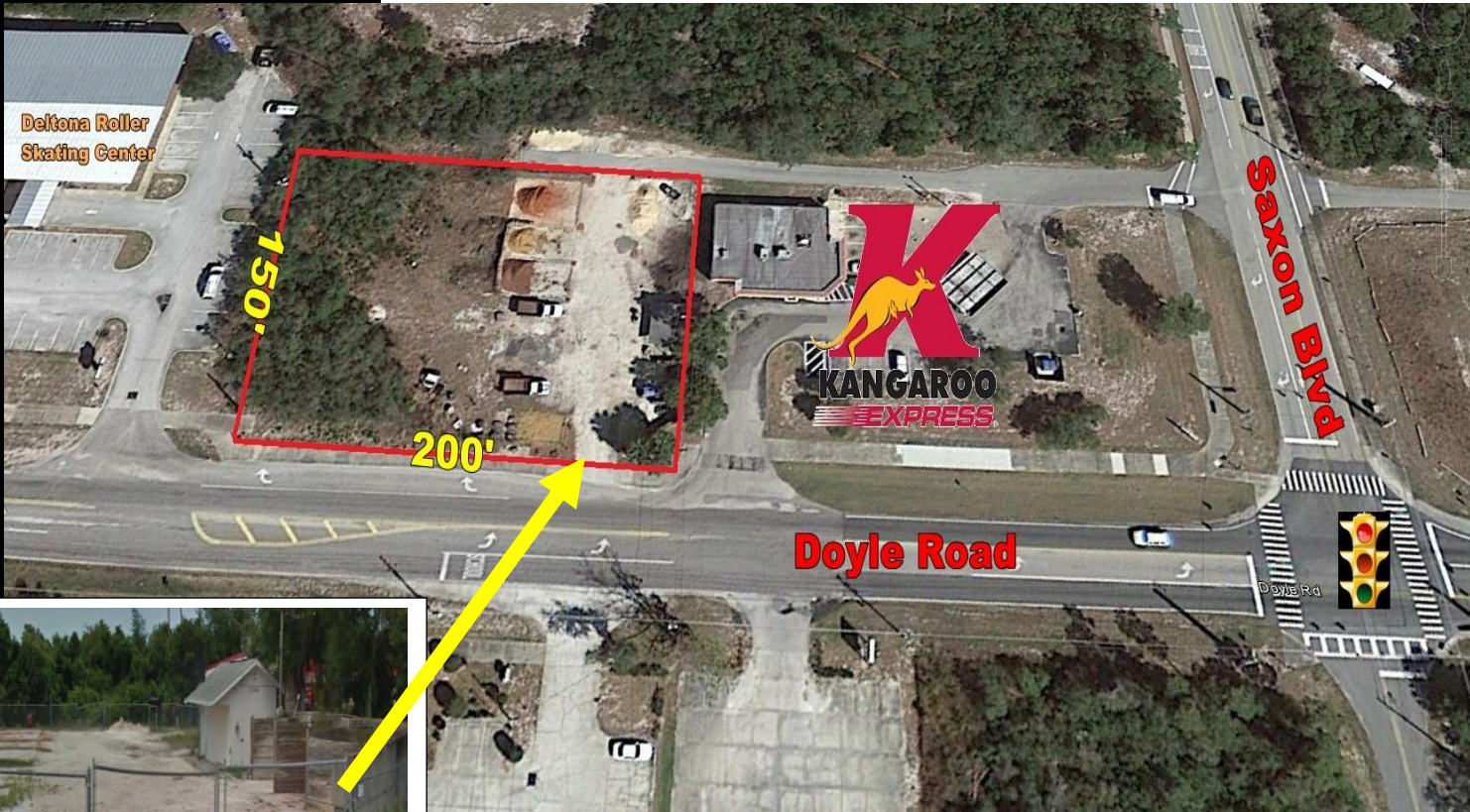


**FOR  
SALE**

# FENCED COMMERCIAL SITE WITH SMALL OFFICE

1700 DOYLE ROAD DELTONA, FL 32725



## PROPERTY HIGHLIGHTS

- (3) Commercial Lots in Deltona, FL totaling 30,000 SF of land
- 200' of frontage by 150' deep (.69 Acre with C-1 Zoning)
- Most of the site is cleared and ready for use.
- Previous user was a mulch user with power and water on site
- Existing 250 SF+/- office onsite can be reused
- 290' away from the intersection of Doyle and Saxon Blvd
- Drive thru access from Doyle and rear access road
- Owner Financing with \$50K down at 7% IO on a 30-Year term

## **CONTACT**

Vincent F. Wolle, CCIM, SIOR  
407.448.1823 *mobile*  
CREManager@Gmail.com

**Results Real Estate Partners, LLC**  
*Licensed Commercial Real Estate Brokers*  
108 Commerce Street, Suite 200  
Lake Mary, Florida 32746

407.647.0200 *main*  
407.647.0205 *fax*

[www.ResultsREPartners.com](http://www.ResultsREPartners.com)

**Sales Price: \$350,000 (Owner Financing)**

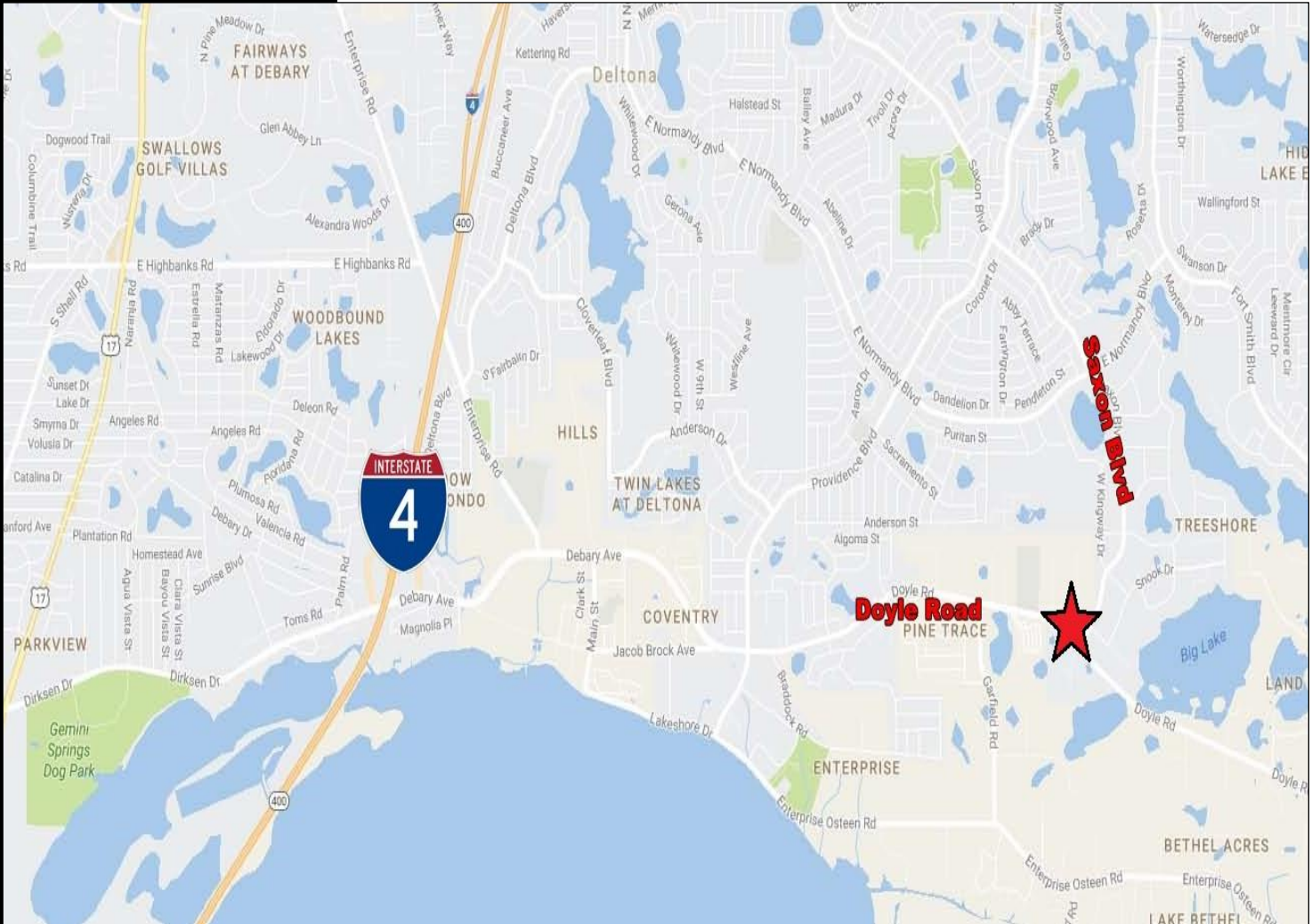
This information is from sources we deem reliable and is subject to prior sale, lease, withdrawal without notice, or change in prices, rates, or conditions. No representation is made as to the accuracy of any information furnished.



**FOR  
SALE**

**FENCED COMMERCIAL SITE  
WITH SMALL OFFICE**

1700 DOYLE ROAD DELTONA, FL 32725



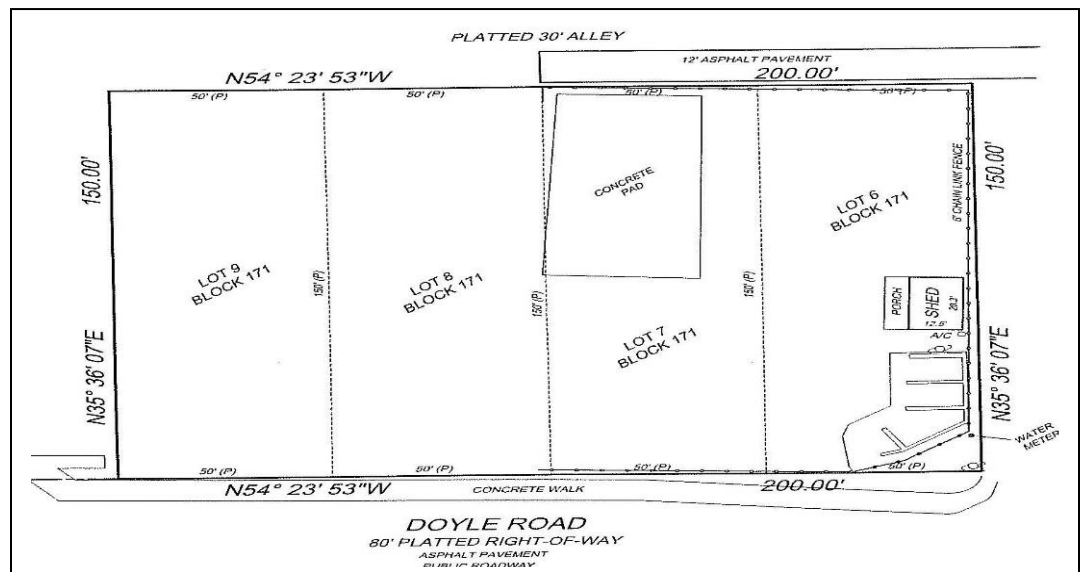
**CONTACT**

Vincent F. Wolle, CCIM, SIOR  
407.448.1823 mobile  
CREManager@Gmail.com

**Results Real Estate Partners, LLC**  
Licensed Commercial Real Estate Brokers  
108 Commerce Street, Suite 200  
Lake Mary, Florida 32746

407.647.0200 main  
407.647.0205 fax

www.ResultsREPartners.com



This information is from sources we deem reliable and is subject to prior sale, lease, withdrawal without notice, or change in prices, rates, or conditions. No representation is made as to the accuracy of any information furnished.