

**FOR
LEASE**

OFFICE, SHOWROOM, & WAREHOUSE
8901 BOGGY CREEK RD, SUITE 100-200
ORLANDO, FL 32824



**End Cap Unit
3 Docks and 1 Ramp
Easy Access for
Loading**

PROPERTY HIGHLIGHTS

- 14,400 SF End cap unit built in 2002 (120' deep by 80' wide)
- 40'x40' column spacing, rear warehouse windows, covered truck loading
- 2,377 SF of office & 12,023 SF of warehouse with (4) 10x12 overhead doors
- 277-480 Volt 3 Phase Power
- Ample Parking, I-P zoning, Corner of E. Landstreet Rd and Boggy Creek Rd with (2 Access points) and great visibility (Corner Unit)
- 3 docks, 1 ramp access with 24' clear height, sprinklered
- Close to Orange Ave, Sand Lake Rd, McCoy Rd, 436, 441 and easy access to the Florida Turnpike, 528, and the Orlando International Airport
- 10 Year Term Minimum
- **Lease Rate: \$9.00 NNN (OPEX \$2.50)**

C O N T A C T

Vincent F. Wolle, CCIM, SIOR
407.448.1823 *mobile*
CREManager@Gmail.com

Results Real Estate Partners, LLC
Licensed Commercial Real Estate Brokers
108 Commerce Street, Suite 200
Lake Mary, Florida 32746

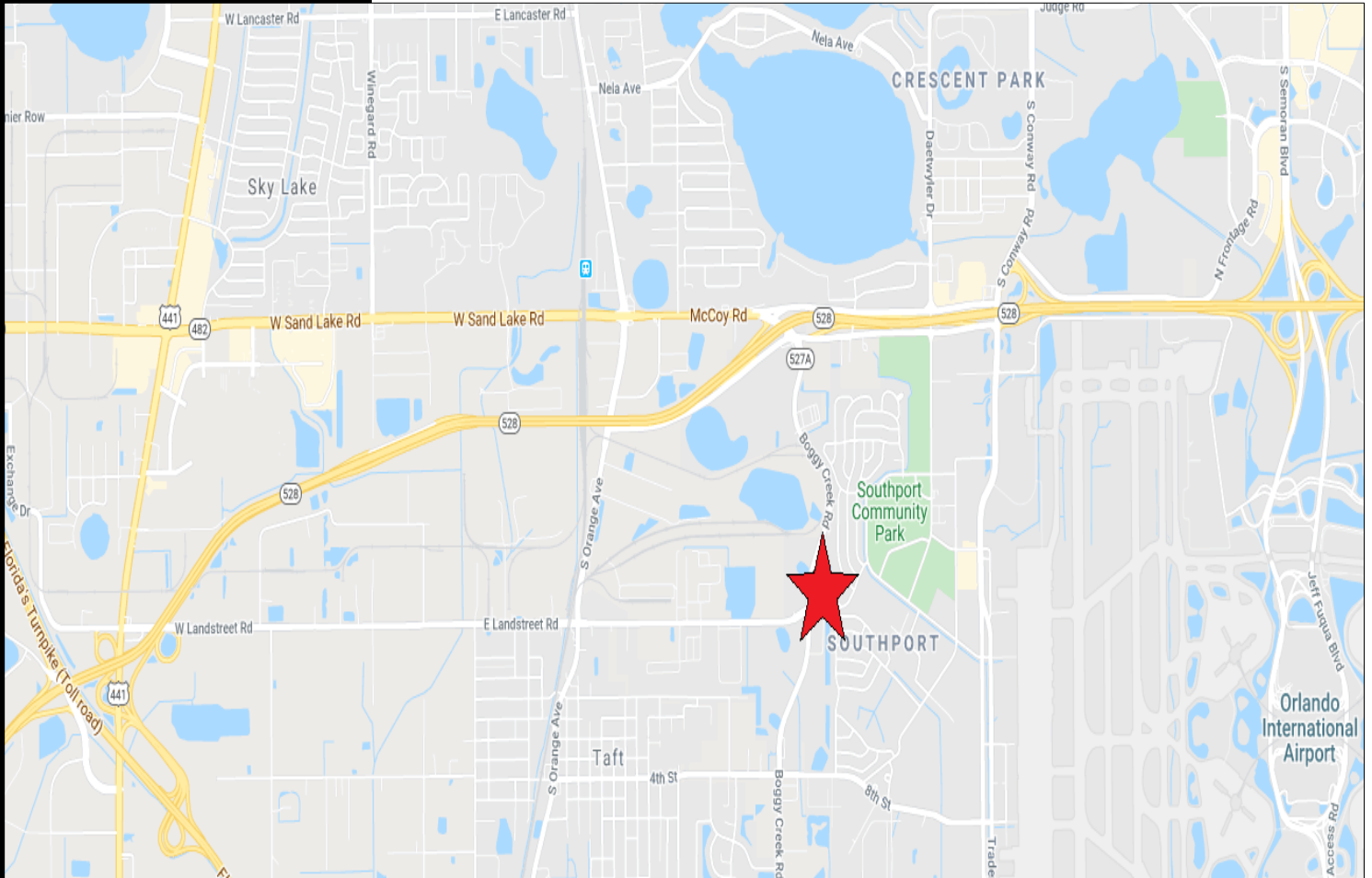
407.647.0200 *main*
407.647.0205 *fax*

www.ResultsREPartners.com

This information is from sources we deem reliable and is subject to prior sale, lease, withdrawal without notice, or change in prices, rates, or conditions. No representation is made as to the accuracy of any information furnished.

**FOR
LEASE**

OFFICE, SHOWROOM, & WAREHOUSE
8901 BOGGY CREEK RD, SUITE 100-200
ORLANDO, FL 32824



CONTACT

Vincent F. Wolle, CCIM, SIOR
407.448.1823 *mobile*
CREManager@Gmail.com

Results Real Estate Partners, LLC
Licensed Commercial Real Estate Brokers
108 Commerce Street, Suite 200
Lake Mary, Florida 32746

407.647.0200 *main*
407.647.0205 *fax*

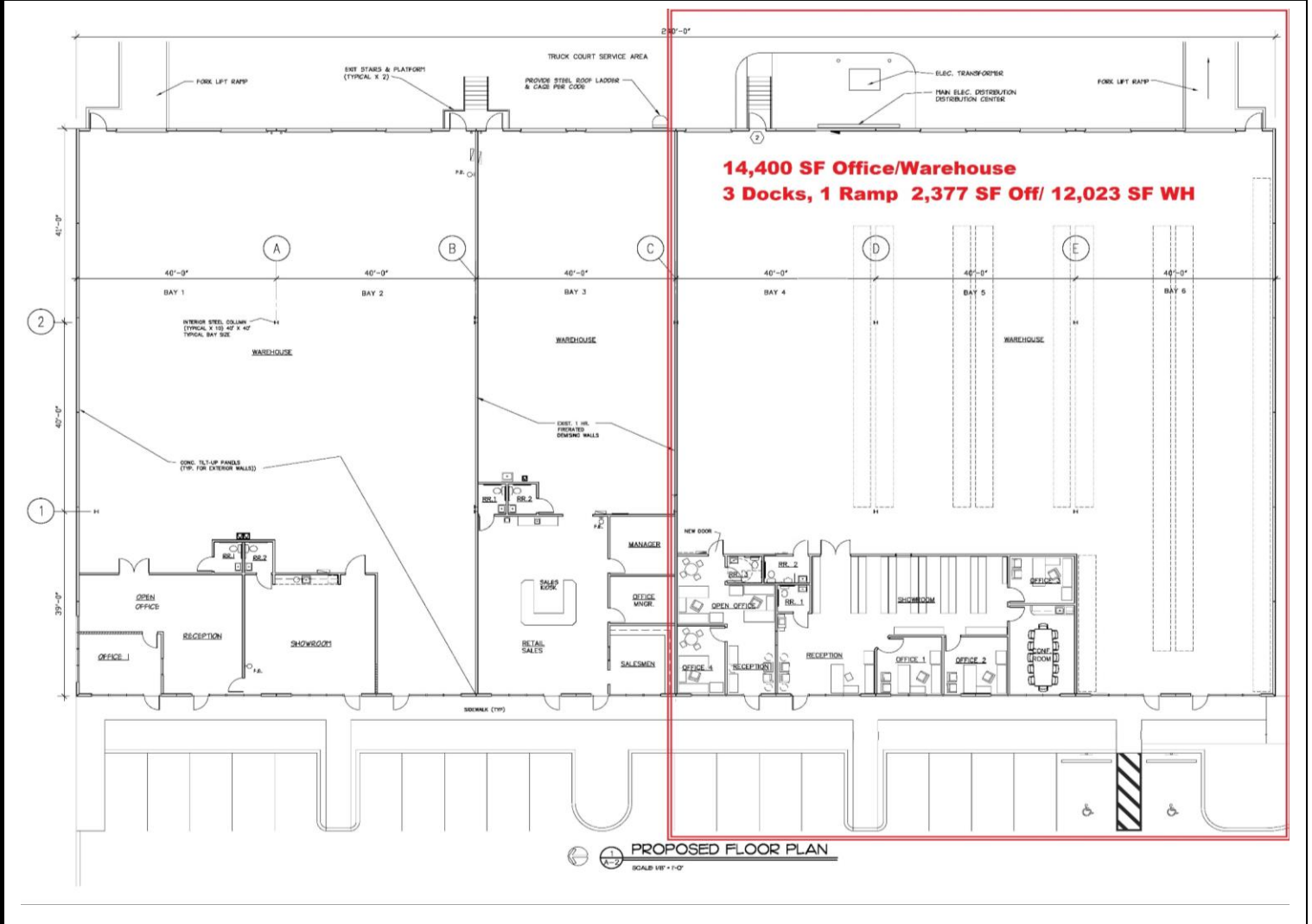
www.ResultsREPartners.com



This information is from sources we deem reliable and is subject to prior sale, lease, withdrawal without notice, or change in prices, rates, or conditions. No representation is made as to the accuracy of any information furnished.

**FOR
LEASE**

OFFICE, SHOWROOM, & WAREHOUSE
8901 BOGGY CREEK RD, SUITE 100-200
ORLANDO, FL 32824



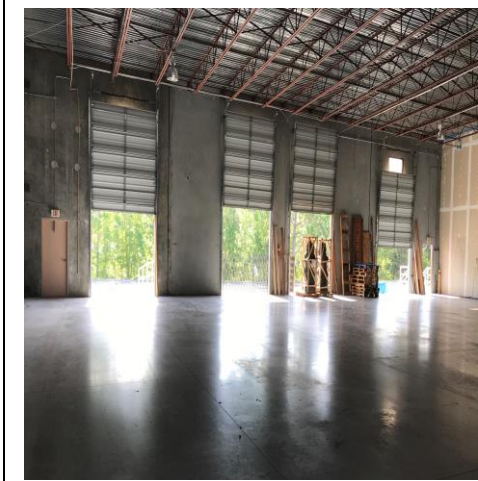
CONTACT

Vincent F. Wolle, CCIM, SIOR
407.448.1823 mobile
CREManager@Gmail.com

Results Real Estate Partners, LLC
Licensed Commercial Real Estate Brokers
108 Commerce Street, Suite 200
Lake Mary, Florida 32746

407.647.0200 main
407.647.0205 fax

www.ResultsREPartners.com



This information is from sources we deem reliable and is subject to prior sale, lease, withdrawal without notice, or change in prices, rates, or conditions. No representation is made as to the accuracy of any information furnished.