

**FOR
LEASE**

MEDICAL/OFFICE SPACE

1049 Willa Springs Blvd, Suite 1031-1051
Winter Springs, FL 32708



PROPERTY HIGHLIGHTS

- (2) Units, totaling 5,100 SF (Contiguous)
- Unit 1031 is 2,180 SF of Turn-Key Medical Space
- (5) Exam Rooms, (2) Bathrooms, Lab Area, Break Area, Billing Area, Reception Area, Waiting Room, IT Room, and (2) Private Offices
- Unit 1051 is 2,920 SF with (5) Nice Offices, Reception Area, 2 Large Open Work Areas, a Kitchen, IT Room, and 2 Bathrooms
- .96 Acre size zoned Office with 50 parking spaces (5/1000)
- Behind the Publix shopping center at the SW Corner of Red Bug Lake Road and Tuskawilla Rd with tons of restaurants options
- Easy access to 417, 436, Aloma Ave (426), 434, Red Bug Road, and Tuskawilla Road surrounded by tons of residential
- 5 Year Minimum Terms
- **Lease Rate: \$18.00-20.00 NNN**



CONTACT

Vincent F. Wolle, CCIM, SIOR
407.448.1823 *mobile*
CREManager@Gmail.com

Results Real Estate Partners, LLC
Licensed Commercial Real Estate Brokers
108 Commerce Street, Suite 200
Lake Mary, Florida 32746

407.647.0200 *main*
407.647.0205 *fax*

www.ResultsREPartners.com

This information is from sources we deem reliable and is subject to prior sale, lease, withdrawal without notice, or change in prices, rates, or conditions. No representation is made as to the accuracy of any information furnished.

**FOR
LEASE**

MEDICAL/OFFICE SPACE

1049 Willa Springs Blvd, Suite 1031-1051
Winter Springs, FL 32708



CONTACT

Vincent F. Wolle, CCIM, SIOR
407.448.1823 *Mobile*
CREManager@Gmail.com

Results Real Estate Partners, LLC
Licensed Commercial Real Estate Brokers
108 Commerce Street, Suite 200
Lake Mary, Florida 32746

407.647.0200 *main*
407.647.0205 *fax*

www.ResultsREPartners.com

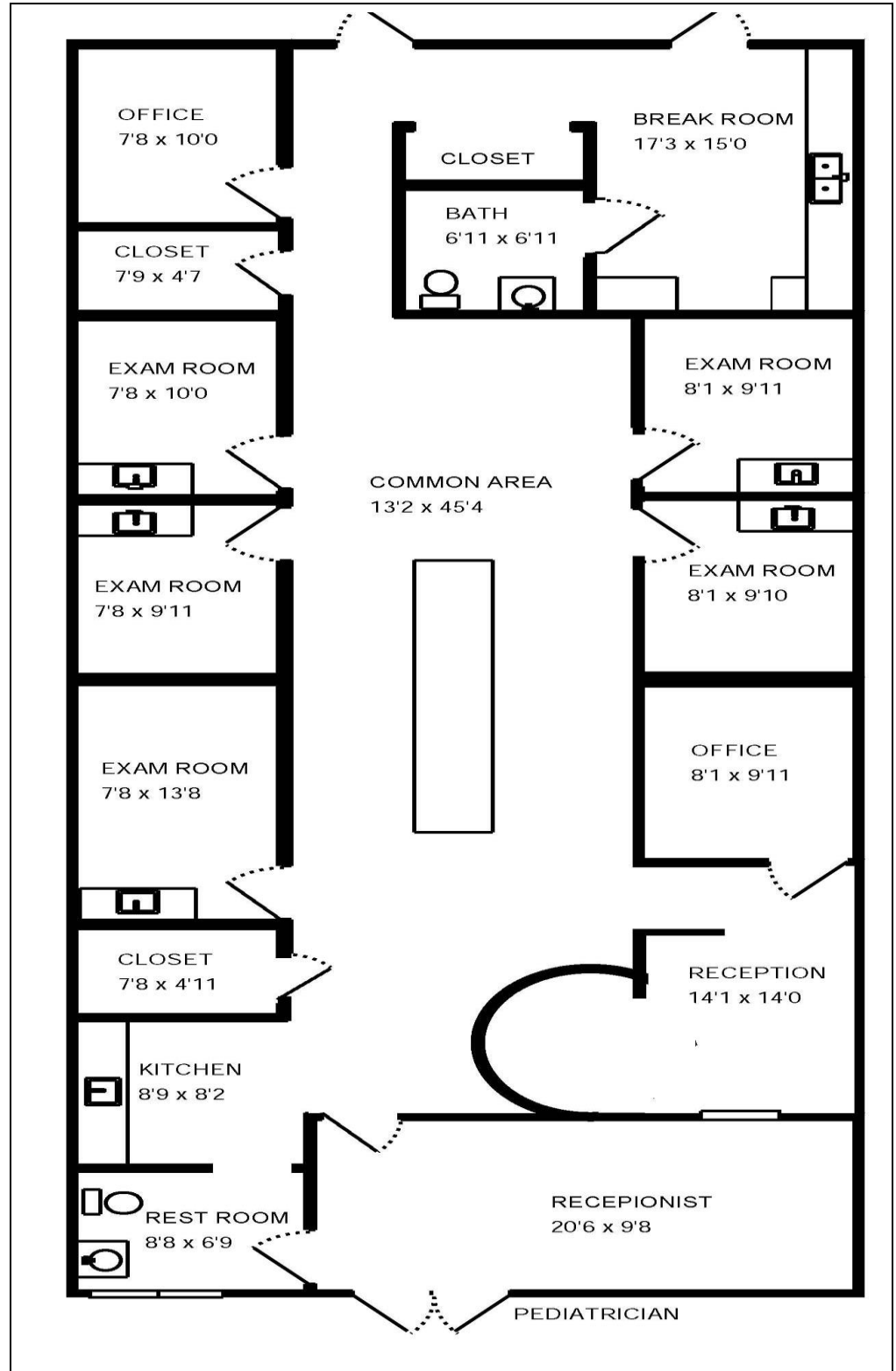


This information is from sources we deem reliable and is subject to prior sale, lease, withdrawal without notice, or change in prices, rates, or conditions. No representation is made as to the accuracy of any information furnished.

**FOR
LEASE**

MEDICAL/OFFICE SPACE

1049 Willa Springs Blvd, Suite 1031-1051
Winter Springs, FL 32708



CONTACT

Vincent F. Wolle, CCIM, SIOR
407.448.1823 *Mobile*
CREManager@Gmail.com

Results Real Estate Partners, LLC

Licensed Commercial Real Estate Brokers
108 Commerce Street, Suite 200
Lake Mary, Florida 32746

407.647.0200 *main*
407.647.0205 *fax*

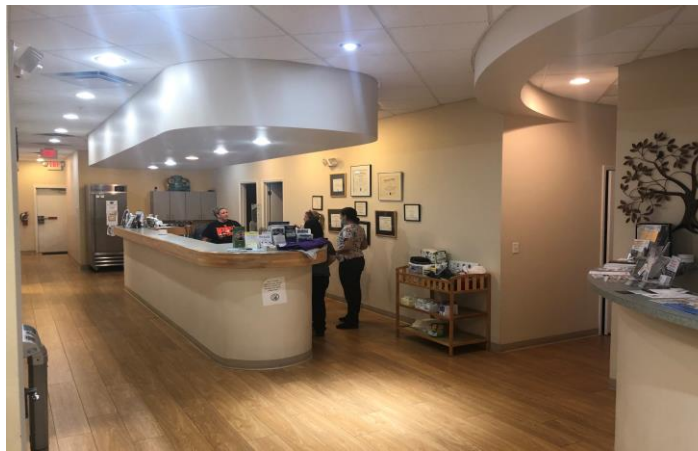
www.ResultsREPartners.com

This information is from sources we deem reliable and is subject to prior sale, lease, withdrawal without notice, or change in prices, rates, or conditions. No representation is made as to the accuracy of any information furnished.

**FOR
LEASE**

MEDICAL/OFFICE SPACE

1049 Willa Springs Blvd, Suite 1031-1051
Winter Springs, FL 32708



Results Real Estate Partners, LLC

Licensed Commercial Real Estate Brokers
108 Commerce Street, Suite 200
Lake Mary, Florida 32746

407.647.0200 main
407.647.0205 fax

CONTACT

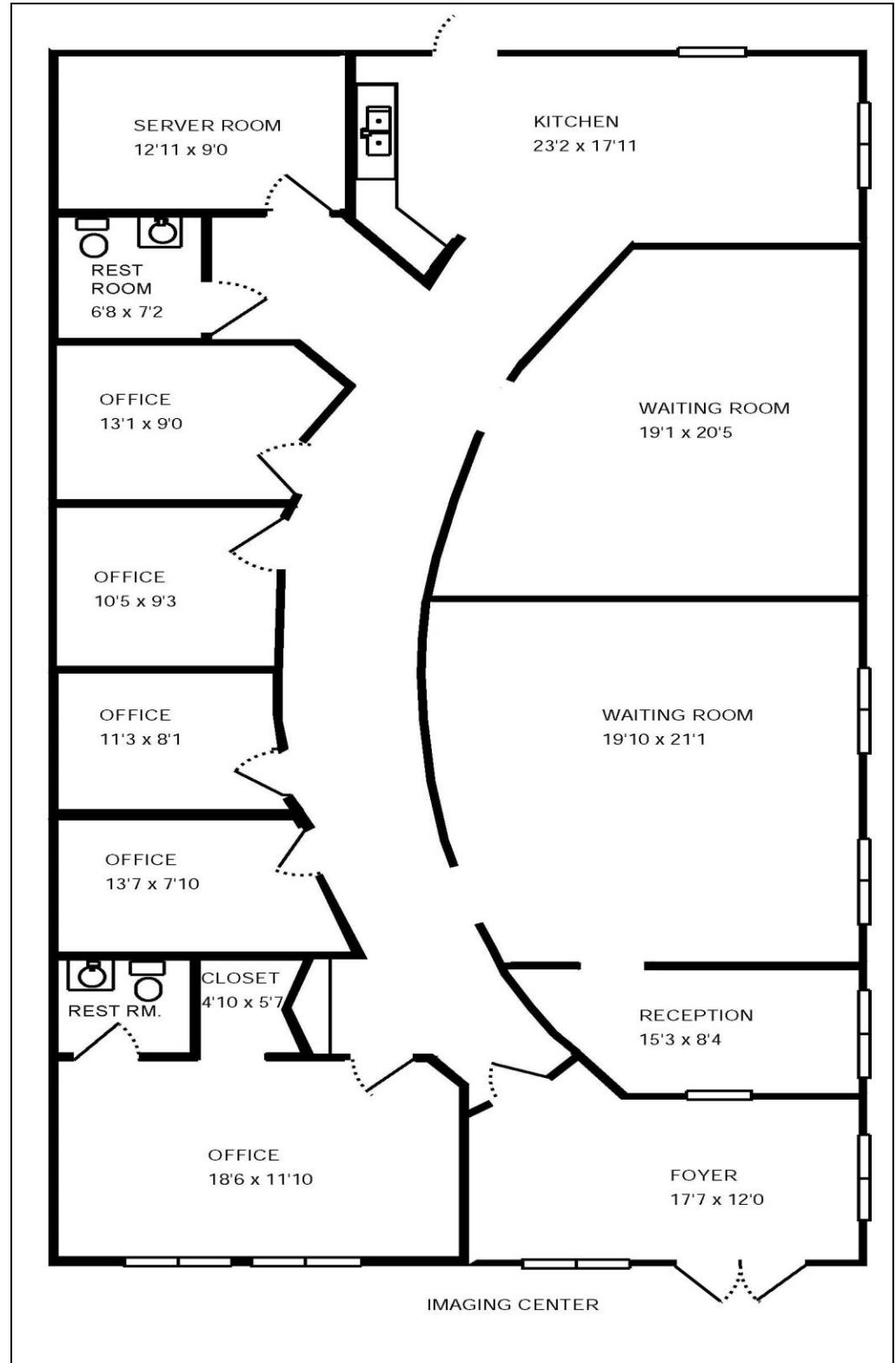
Vincent F. Wolle, CCIM, SIOR
407.448.1823 Mobile
CREManager@Gmail.com

This information is from sources we deem reliable and is subject to prior sale, lease, withdrawal without notice, or change in prices, rates, or conditions. No representation is made as to the accuracy of any information furnished.

**FOR
LEASE**

MEDICAL/OFFICE SPACE

1049 Willa Springs Blvd, Suite 1031-1051
Winter Springs, FL 32708



CONTACT

Vincent F. Wolle, CCIM, SIOR
407.448.1823 *Mobile*
CREManager@Gmail.com

Results Real Estate Partners, LLC

Licensed Commercial Real Estate Brokers
108 Commerce Street, Suite 200
Lake Mary, Florida 32746

407.647.0200 *main*
407.647.0205 *fax*

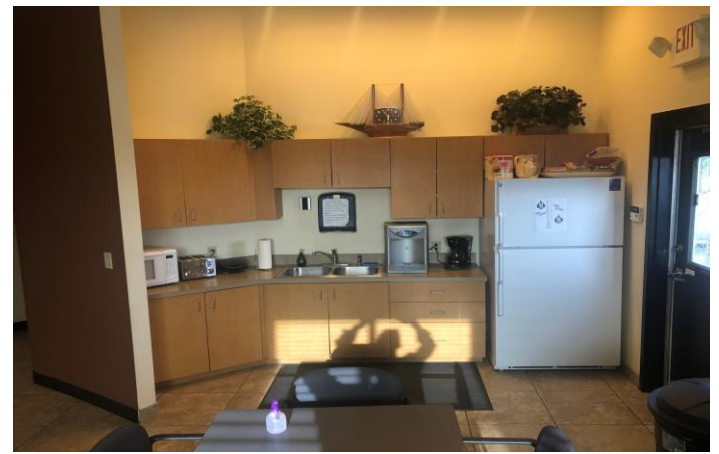
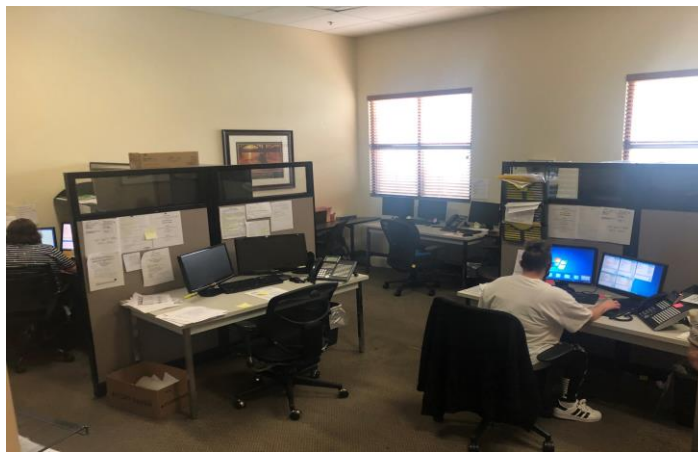
www.ResultsREPartners.com

This information is from sources we deem reliable and is subject to prior sale, lease, withdrawal without notice, or change in prices, rates, or conditions. No representation is made as to the accuracy of any information furnished.

**FOR
LEASE**

MEDICAL/OFFICE SPACE

1049 Willa Springs Blvd, Suite 1031-1051
Winter Springs, FL 32708



Results Real Estate Partners, LLC

Licensed Commercial Real Estate Brokers

108 Commerce Street, Suite 200
Lake Mary, Florida 32746

407.647.0200 *main*
407.647.0205 *fax*

C O N T A C T

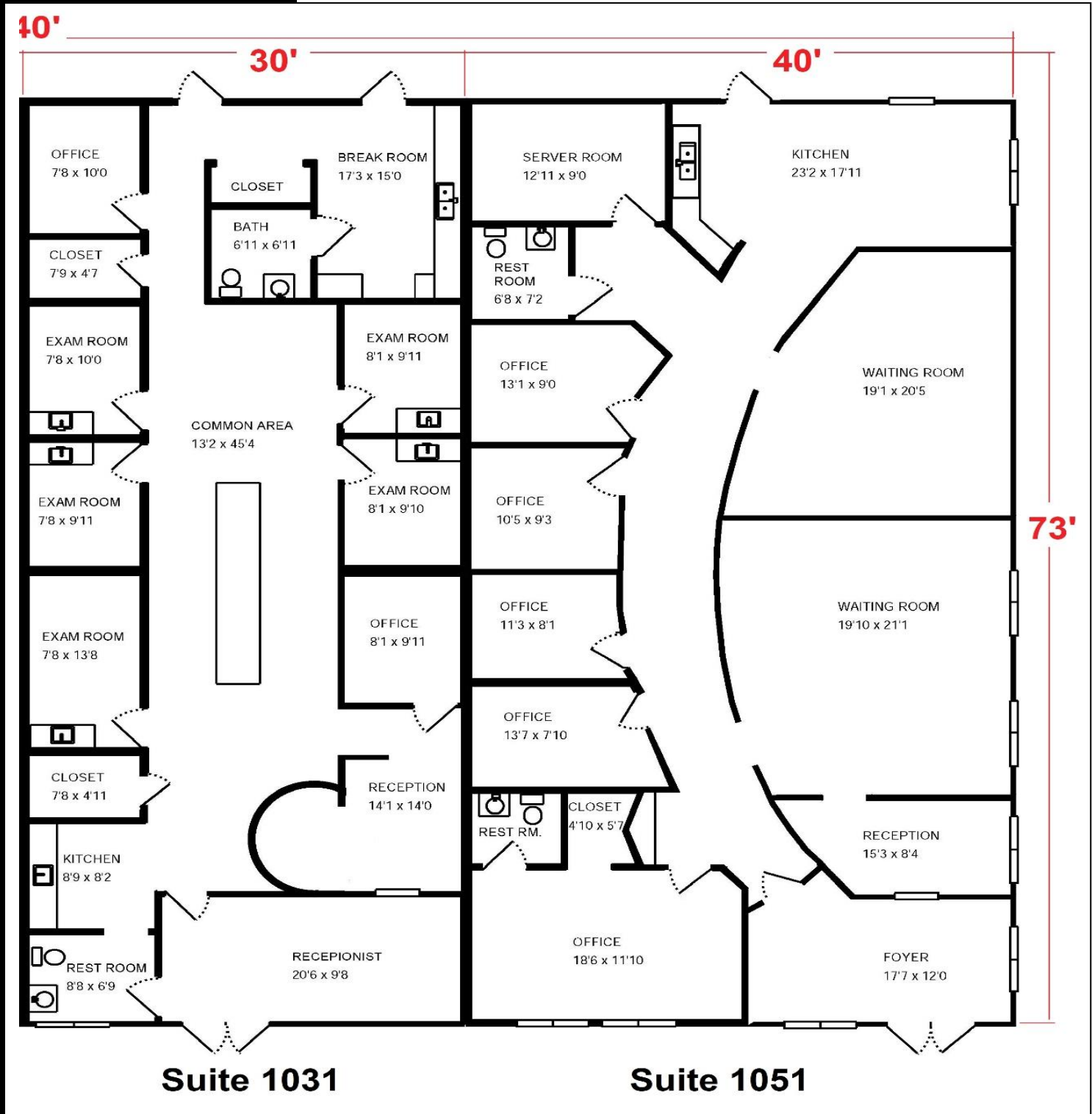
Vincent F. Wolle, CCIM, SIOR
407.448.1823 *Mobile*
CREManager@Gmail.com

This information is from sources we deem reliable and is subject to prior sale, lease, withdrawal without notice, or change in prices, rates, or conditions. No representation is made as to the accuracy of any information furnished.

**FOR
LEASE**

MEDICAL/OFFICE SPACE

1049 Willa Springs Blvd, Suite 1031-1051
Winter Springs, FL 32708



This information is from sources we deem reliable and is subject to prior sale, lease, withdrawal without notice, or change in prices, rates, or conditions. No representation is made as to the accuracy of any information furnished.