

**AVAILABLE**

# FOR LEASE

**2426-2438 VISCOUNT ROW**

**ORLANDO, FL 32809**



## CONTACT

Vincent F. Wolle, CCIM, SIOR  
407.448.1823 *mobile*  
VWolle@ResultsREPartners.com

**Results Real Estate Partners, LLC**  
*Licensed Commercial Real Estate Brokers*  
108 Commerce Street, Suite 200  
Lake Mary, Florida 32746

407.647.0200 *main*  
407.647.0205 *fax*

[www.ResultsREPartners.com](http://www.ResultsREPartners.com)



## SPACE AVAILABILITY

UNIT 2426:                   6,450 SF WITH 1,500 SF OF OFFICE  
UNIT 2430-2438:         9,000 SF WITH 1,625 SF OF OFFICE

## PROPERTY HIGHLIGHTS

- 20,665 SF Total Building
- 100% A/C Warehouse
- 10'x12' Dock High Door in each UNIT (2) FOR 2430-2438
- Ramp Access for 2430
- Zoned I-3
- 2/1,000 Parking Ratio
- Metal Halide lighting throughout warehouses
- Rental Rate:    \$10.00 Modified Gross

**AVAILABLE**

**2430-2438 VISCOUNT ROW**

**ORLANDO, FL 32809**

# FOR LEASE



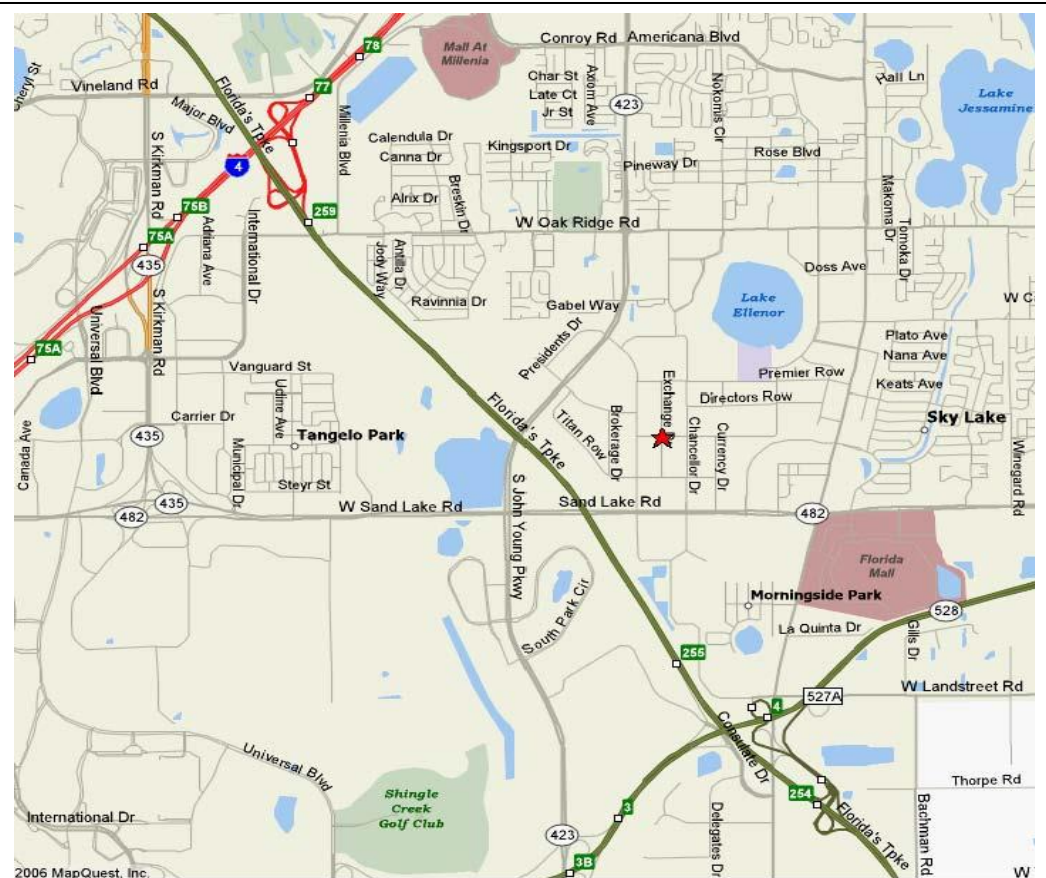
## CONTACT

Vincent F. Wolle, CCIM, SIOR  
407.448.1823 mobile  
CREManager@Gmail.com

**Results Real Estate Partners, LLC**  
*Licensed Commercial Real Estate Brokers*  
108 Commerce Street, Suite 200  
Lake Mary, Florida 32746

407.647.0200 main  
407.647.0205 fax

[www.ResultsREPartners.com](http://www.ResultsREPartners.com)



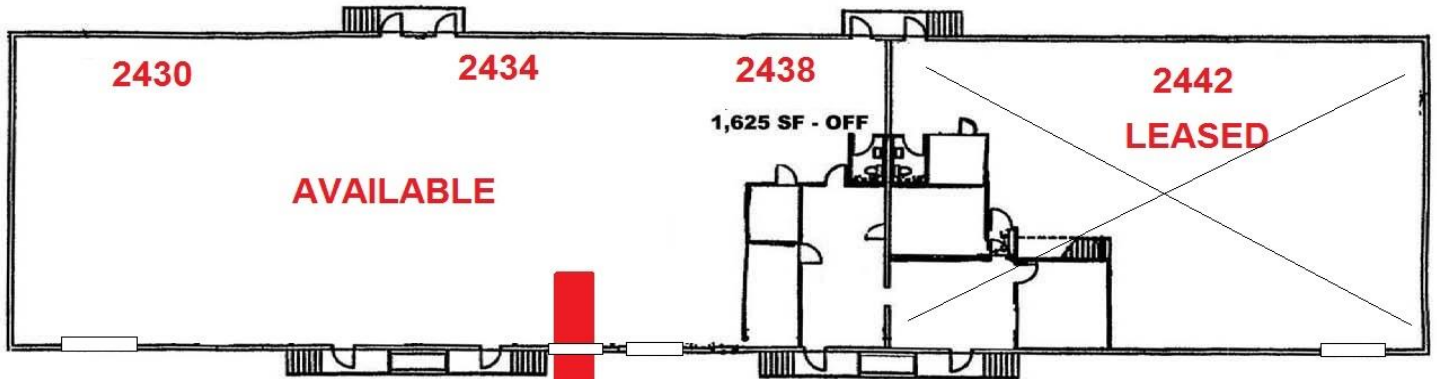
**AVAILABLE**

# FOR LEASE

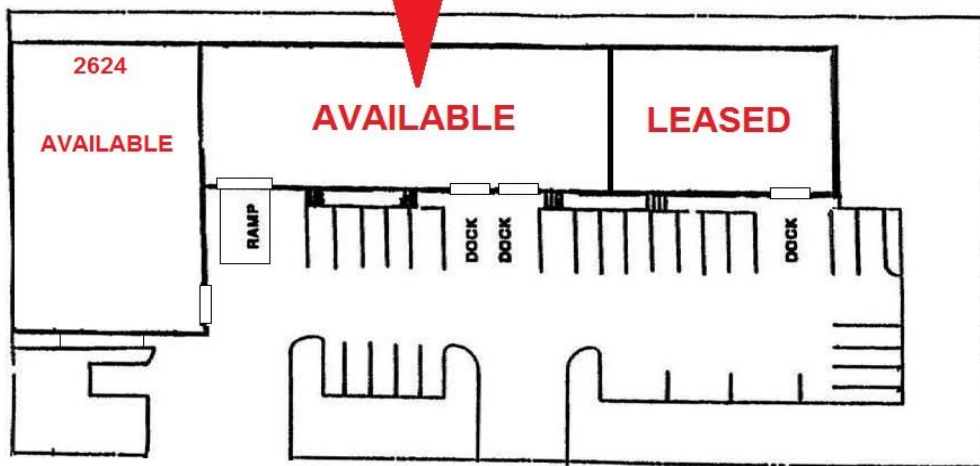
**2430-2438 VISCOUNT ROW**

**ORLANDO, FL 32809**

**FLOOR PLAN**



**SITE PLAN**



**Results Real Estate Partners, LLC**

*Licensed Commercial Real Estate Brokers*

108 Commerce Street, Suite 200

Lake Mary, Florida 32746

407.647.0200 main

407.647.0205 fax

[www.ResultsREPartners.com](http://www.ResultsREPartners.com)



**RESULTS**  
REAL ESTATE PARTNERS, LLC



