

**FOR
SALE**

HARD CORNER DEVELOPMENT SITE

DOWNTOWN ORLANDO

**2612 S. WESTMORELAND DRIVE
ORLANDO, FL**



**Opportunity
Zone**

CONTACT

Vincent F. Wolle, CCIM, SIOR
407.448.1823 *mobile*
CREManager@Gmail.com

Results Real Estate Partners, LLC
Licensed Commercial Real Estate Brokers
108 Commerce Street, Suite 200
Lake Mary, Florida 32746

407.647.0200 *main*
407.647.0205 *fax*

www.ResultsREPartners.com

PROPERTY HIGHLIGHTS

- Development site at the corner of W. Michigan St and S. Westmoreland Dr.
- .12 Acre site (5,188 SF) Zoned C-2 with 100' frontage on W. Michigan and 52' fronting S. Westmoreland Drive
- C-2 Zoning allows for car dealership
- **Opportunity Zone Site and Qualifies for Tax Incentives**
- 850' away from I-4, 1.5 Miles away from Downtown Orlando, 1 mile away from Orange Ave, & 1/4 Mile away from Orange Blossom Trail
- Potential In-house Financing (see Broker for details)
- Price for quick sale
- **Potential joint venture and/or build to suit for National Tenant**
- **Sales Price: \$249,990**

This information is from sources we deem reliable and is subject to prior sale, lease, withdrawal without notice, or change in prices, rates, or conditions. No representation is made as to the accuracy of any information furnished.

**FOR
SALE**

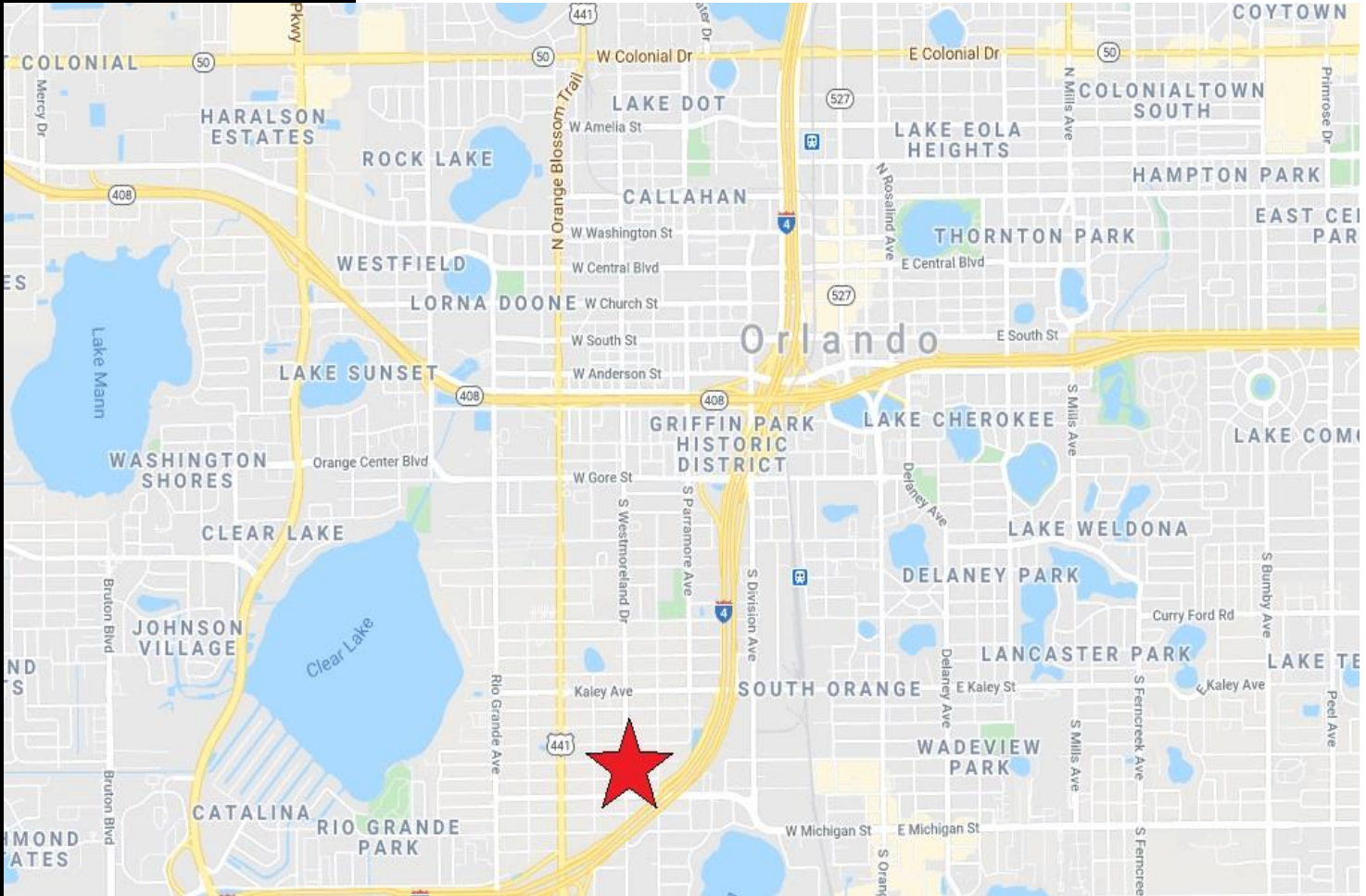
HARD CORNER DEVELOPMENT SITE

DOWNTOWN ORLANDO

**2612 S. WESTMORELAND DRIVE
ORLANDO, FL**



RESULTS
REAL ESTATE PARTNERS, LLC



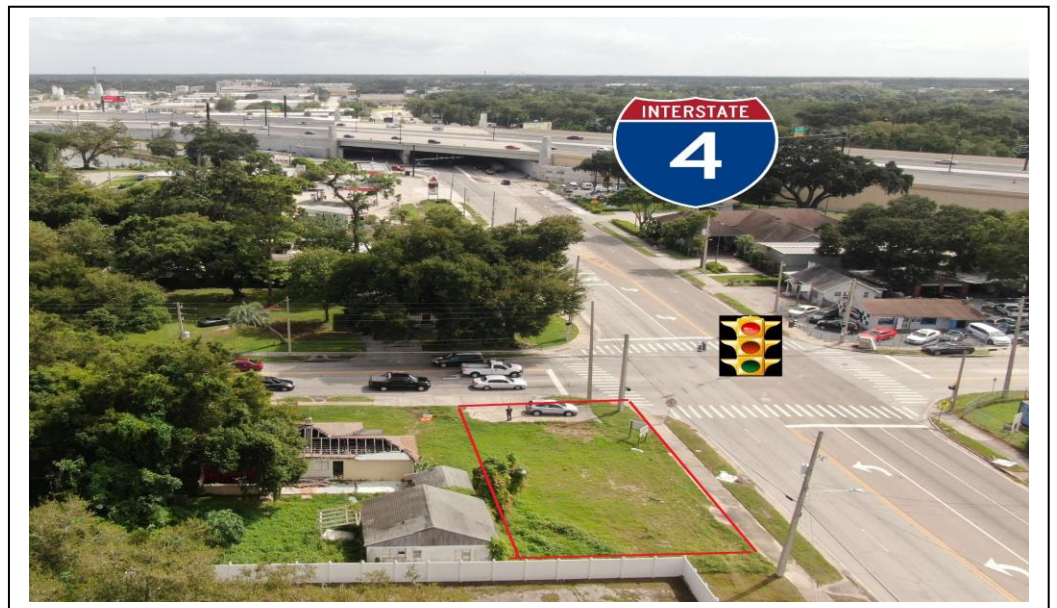
CONTACT

Vincent F. Wolle, CCIM, SIOR
407.448.1823 *mobile*
CREManager@Gmail.com

Results Real Estate Partners, LLC
Licensed Commercial Real Estate Brokers
108 Commerce Street, Suite 200
Lake Mary, Florida 32746

407.647.0200 *main*
407.647.0205 *fax*

www.ResultsREPartners.com



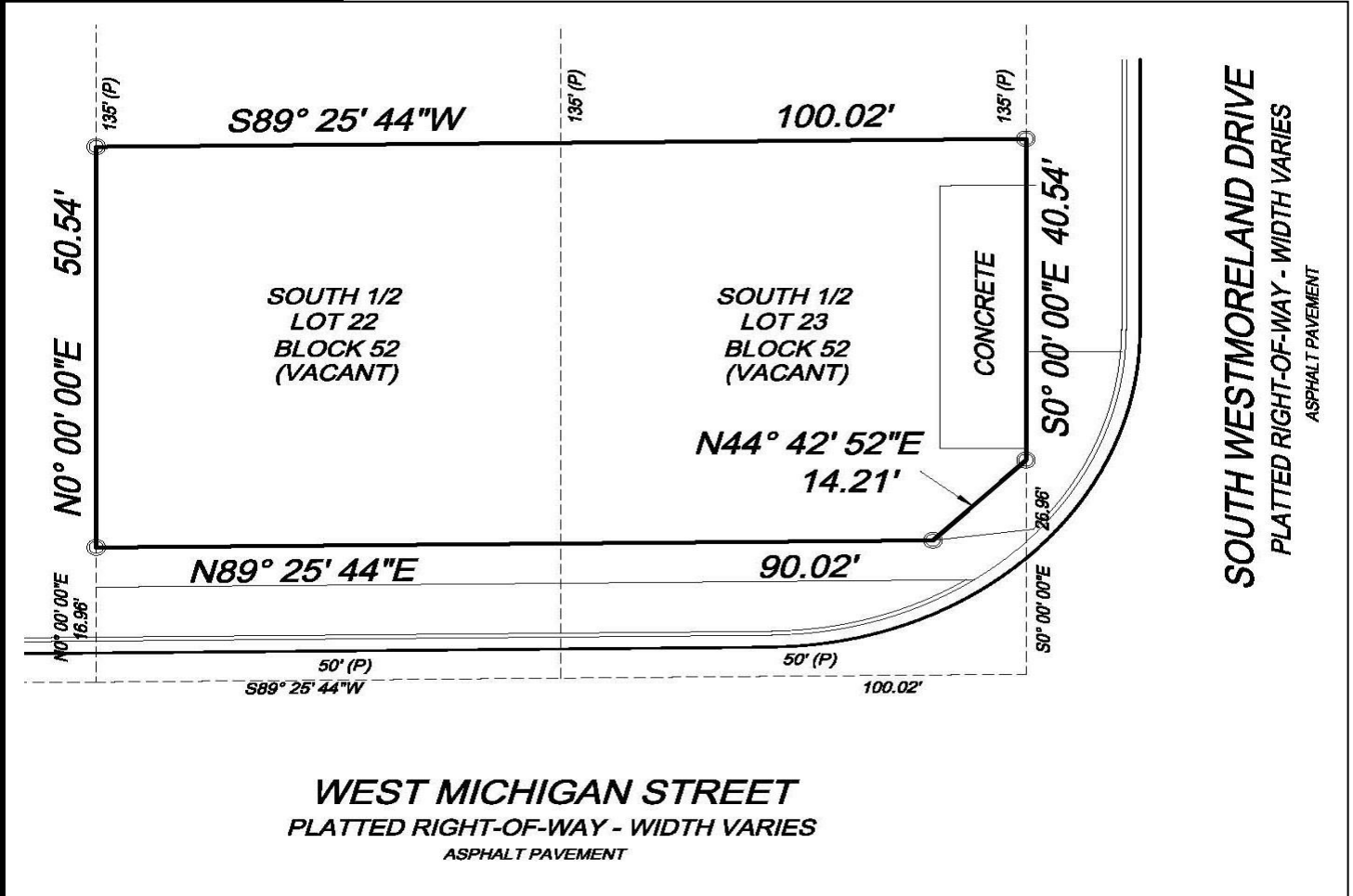
This information is from sources we deem reliable and is subject to prior sale, lease, withdrawal without notice, or change in prices, rates, or conditions. No representation is made as to the accuracy of any information furnished.

**FOR
SALE**

HARD CORNER DEVELOPMENT SITE

DOWNTOWN ORLANDO

**2612 S. WESTMORELAND DRIVE
ORLANDO, FL**



CONTACT

Vincent F. Wolle, CCIM, SIOR
407.448.1823 mobile
CREManager@Gmail.com

Results Real Estate Partners, LLC
Licensed Commercial Real Estate Brokers
108 Commerce Street, Suite 200
Lake Mary, Florida 32746

407.647.0200 main
407.647.0205 fax

www.ResultsREPartners.com



This information is from sources we deem reliable and is subject to prior sale, lease, withdrawal without notice, or change in prices, rates, or conditions. No representation is made as to the accuracy of any information furnished.