



## Commercial Development Site

For Sale  
Sanford, Florida



### Cameron Ave & SR 46

#### Property Details

- Over 8.5 Acres Zoned Commercial Business Park
- Corner of Cameron Ave and SR 46 near the Sanford Airport
- Lot is Cleared and Flat Ready to Develop
- Large Residential Development is being developed directly behind this site with access from Cameron Avenue (Over 900 Units behind this site)
- Near SR 415, 427, HW 17-92, SR 46, & Toll Road 417
- In the Direct Path of Growth
- Owners may Consider “Built-to-Suit”
- Potential Owner Financing Available

#### Sales Price

**\$3,000,000**

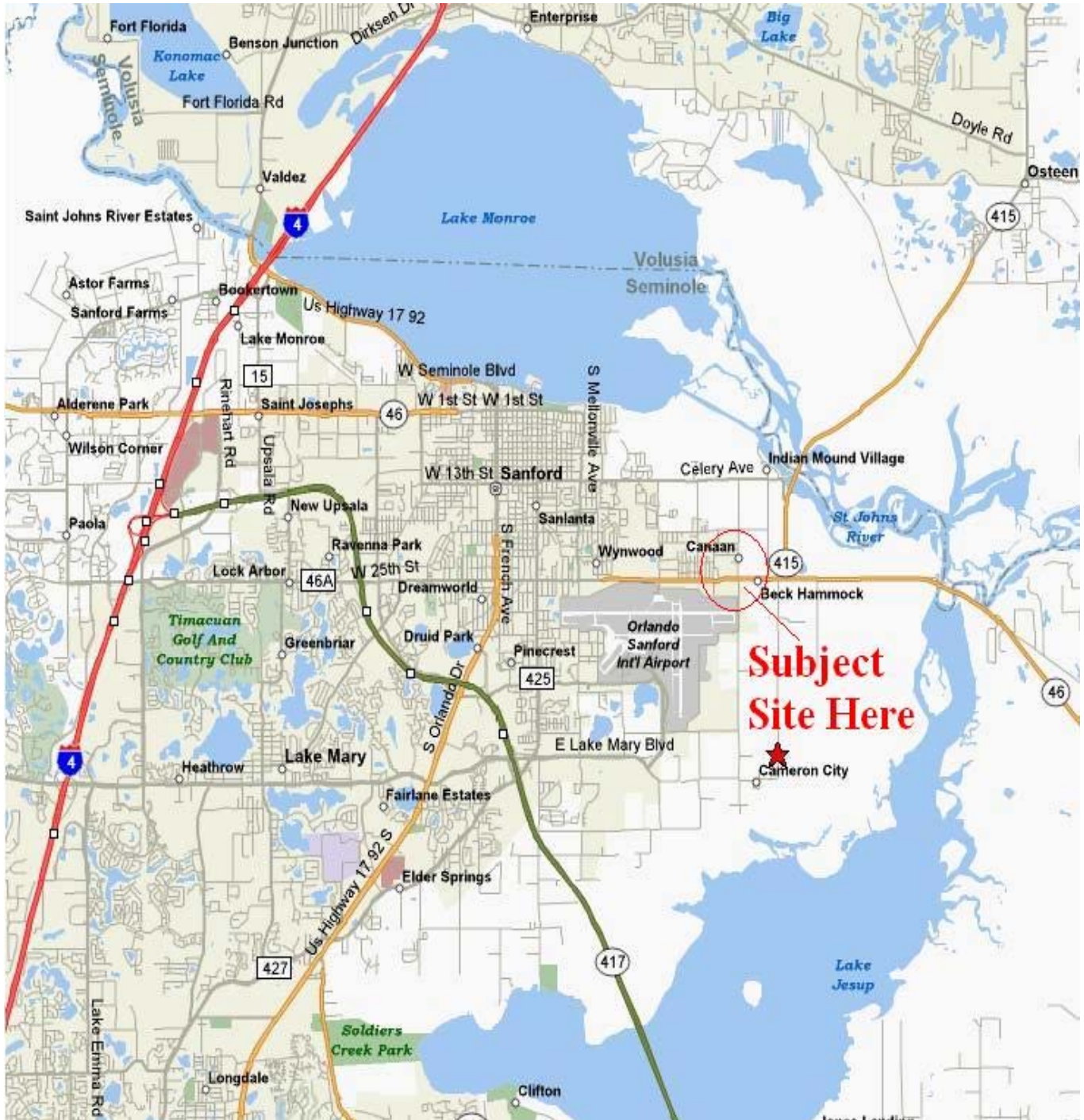
Cash to Seller

Contact

Vincent F. Wolle

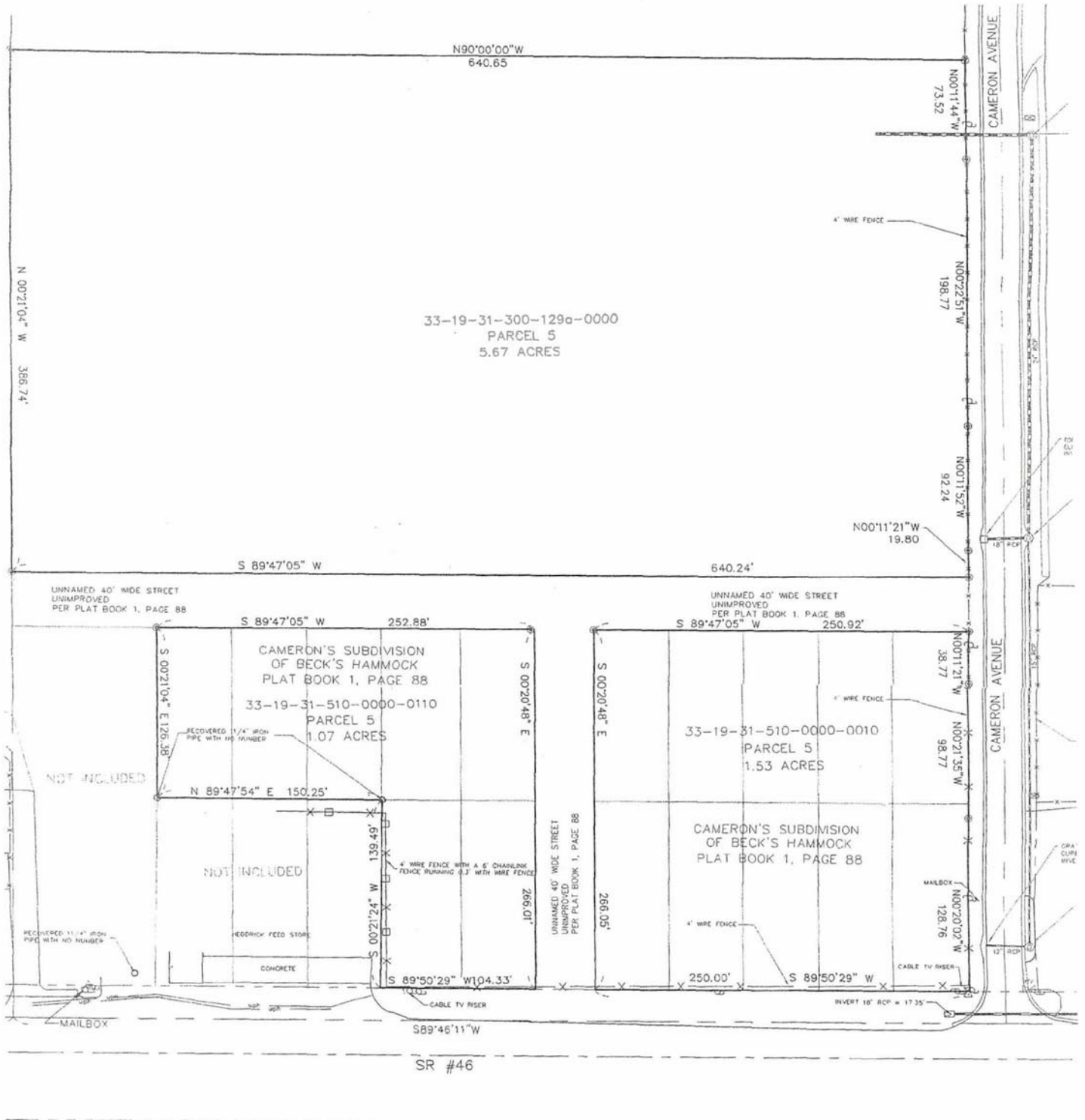
Cell (407) 448-1823

[yvolle@ResultsREPartners.com](mailto:yvolle@ResultsREPartners.com)

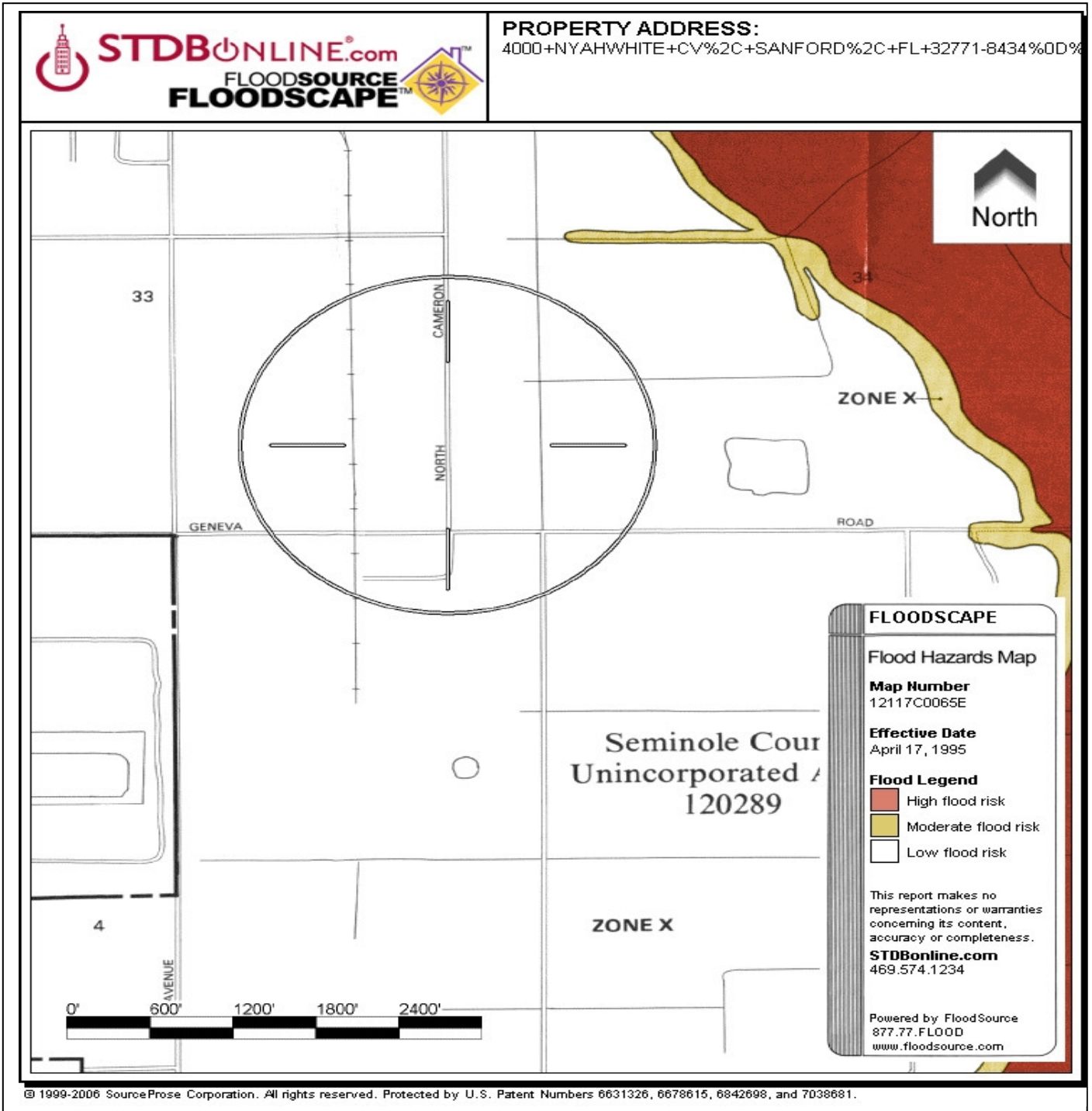




# Survey



# Flood Zone Map



The site does not sit in a flood zone as shown in the Flood Zone Map