

**FOR  
LEASE**

# **13 BAY AUTOMOTIVE SHOP**

**1301-1307 S. WOODLAND BLVD  
DELAND, FL 32720**



## **CONTACT**

Vincent F. Wolle, CCIM, SIOR  
407.448.1823 *mobile*  
CREManager@Gmail.com

### **Results Real Estate Partners, LLC**

*Licensed Commercial Real Estate Brokers*  
108 Commerce Street, Suite 200  
Lake Mary, Florida 32746

407.647.0200 *main*  
407.647.0205 *fax*

www.ResultsREPartners.com

## **Property Details**

- High Exposure, Street Level Auto Repair Shop in Great Condition
- 13 Service Bays on a 6,000 SF Auto Service Building
- 16' Clear Ceiling Height Throughout; Both Spaces Built-out with Office/Waiting Area, Pole and Building Signage
- Renovated in 2018 and 2023
- New Roof, Doors, Store fronts, & Showrooms in 2007
- Located on a 15,860 SF Lot; Zoned B-5 Commercial, Corner Lot
- 31K VPD Traffic County on S. Woodland Blvd
- Located at the Major Intersection of Woodland Blvd (Hwy 17-92) and New Hampshire Ave (Hard Lite Intersection) and 1/3 of a mile from the New Wal-Mart and redevelopment happening all around the site.
- Has been a Meineke Car Care Center since 2006
- Equipment package may be available (see broker for details)
- 10 Year Minimum Lease Terms Only

• **Lease Amount:                    \$12,000.00 Absolute NNN Lease**

This information is from sources we deem reliable and is subject to prior sale, lease, withdrawal without notice, or change in prices, rates, or conditions. No representation is made as to the accuracy of any information furnished.

**FOR  
LEASE**

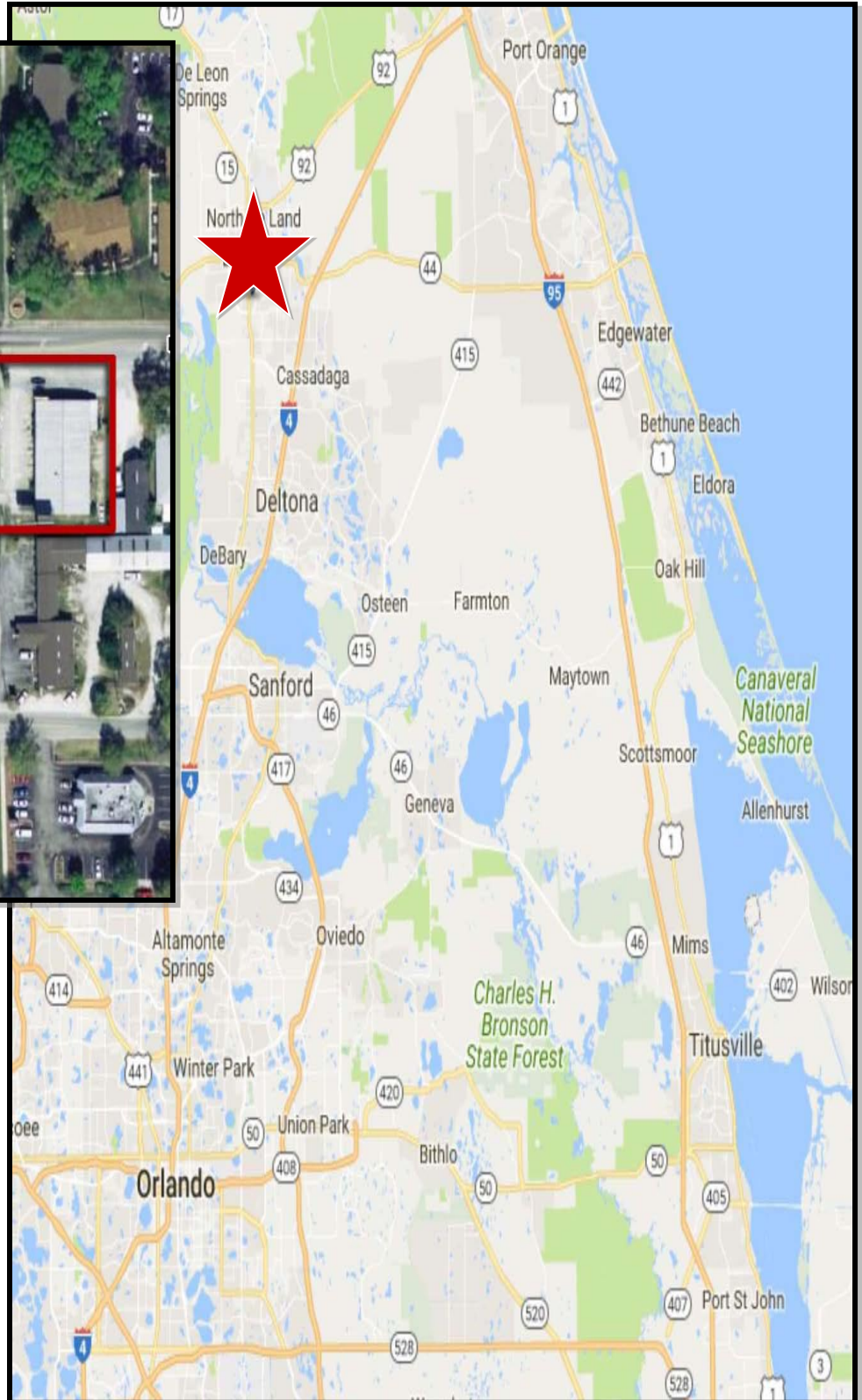
# **13 BAY AUTOMOTIVE SHOP**

**1301-1307 S. WOODLAND BLVD**

**DELAND, FL 32720**



**RESULTS**  
REAL ESTATE PARTNERS, LLC



## **CONTACT**

**Vincent F. Wolle, CCIM, SIOR**  
407.448.1823 *mobile*  
CREManager@Gmail.com

**Results Real Estate Partners, LLC**  
*Licensed Commercial Real Estate Brokers*  
108 Commerce Street, Suite 200  
Lake Mary, Florida 32746

407.647.0200 *main*  
407.647.0205 *fax*

[www.ResultsREPartners.com](http://www.ResultsREPartners.com)

This information is from sources we deem reliable and is subject to prior sale, lease, withdrawal without notice, or change in prices, rates, or conditions. No representation is made as to the accuracy of any information furnished.



**FOR  
LEASE**

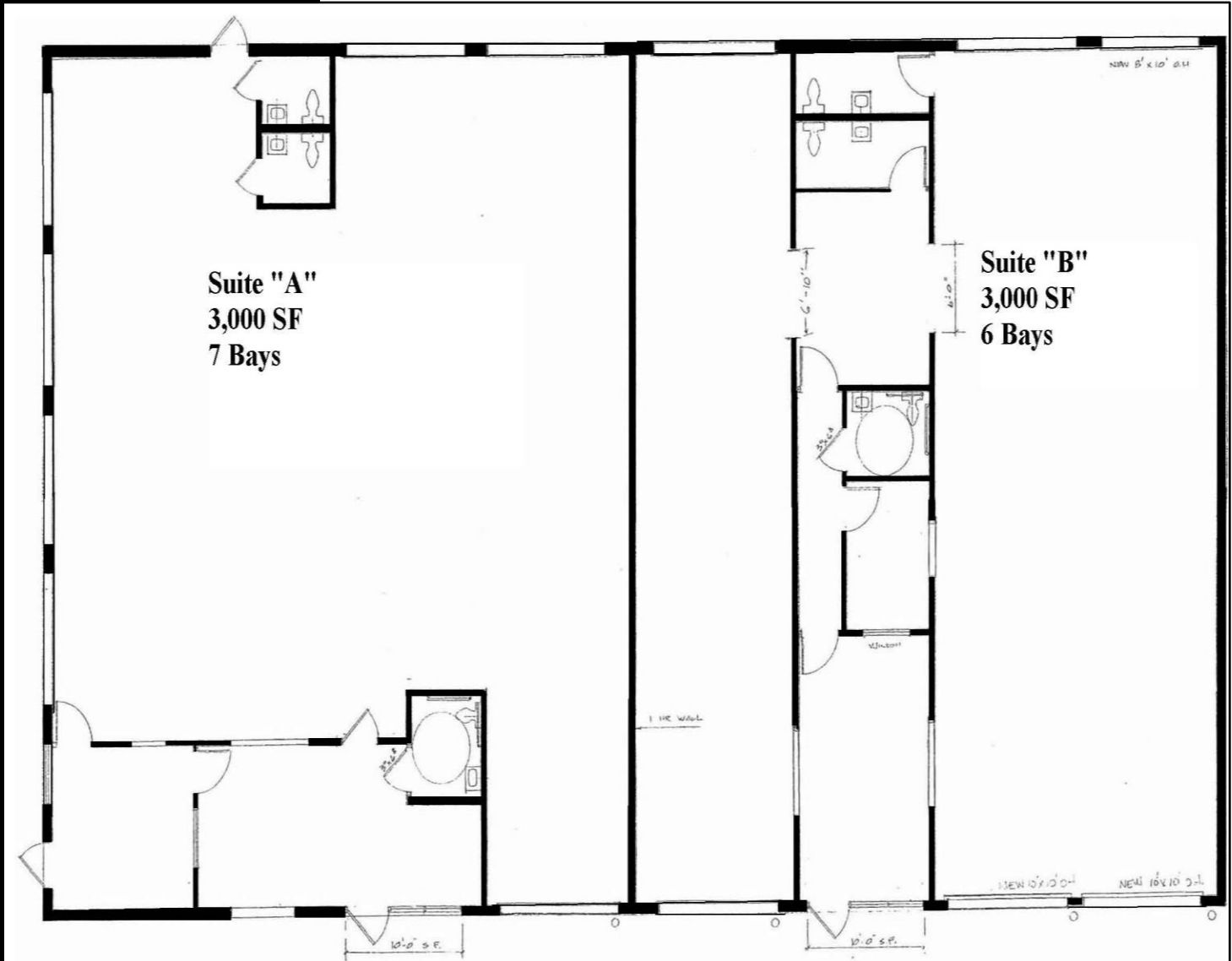
# 13 BAY AUTOMOTIVE SHOP

1301-1307 S. WOODLAND BLVD

DELAND, FL 32720



## FLOOR PLAN



### Results Real Estate Partners, LLC

Licensed Commercial Real Estate Brokers

108 Commerce Street, Suite 200  
Lake Mary, Florida 32746

407.647.0200 *main*  
407.647.0205 *fax*

[www.ResultsREPartners.com](http://www.ResultsREPartners.com)

## **CONTACT**

Vincent F. Wolle, CCIM, SIOR

407.448.1823 *mobile*

CREManager@Gmail.com

This information is from sources we deem reliable and is subject to prior sale, lease, withdrawal without notice, or change in prices, rates, or conditions. No representation is made as to the accuracy of any information furnished.